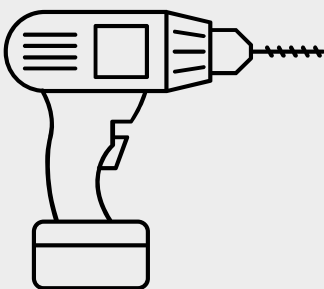


SonaSky

Motorised Skylight Blind



SAFETY INSTRUCTIONS

- 1 This product and all its components must be fitted by a qualified professional.
- 2 Ensure the electrical power is turned off before fitting this product.
- 3 The power supply intended for this product is 12v.
- 4 Ensure the product is securely fastened before releasing.
- 5 Do not install this product externally, in wet or high moisture environments.
- 6 Do not install this product with small children or pets around.
- 7 This product is not intended for use by children.
- 8 Keep the handset out of reach of children.
- 9 Never drop, knock, puncture or immerse the handset in liquids of any type.

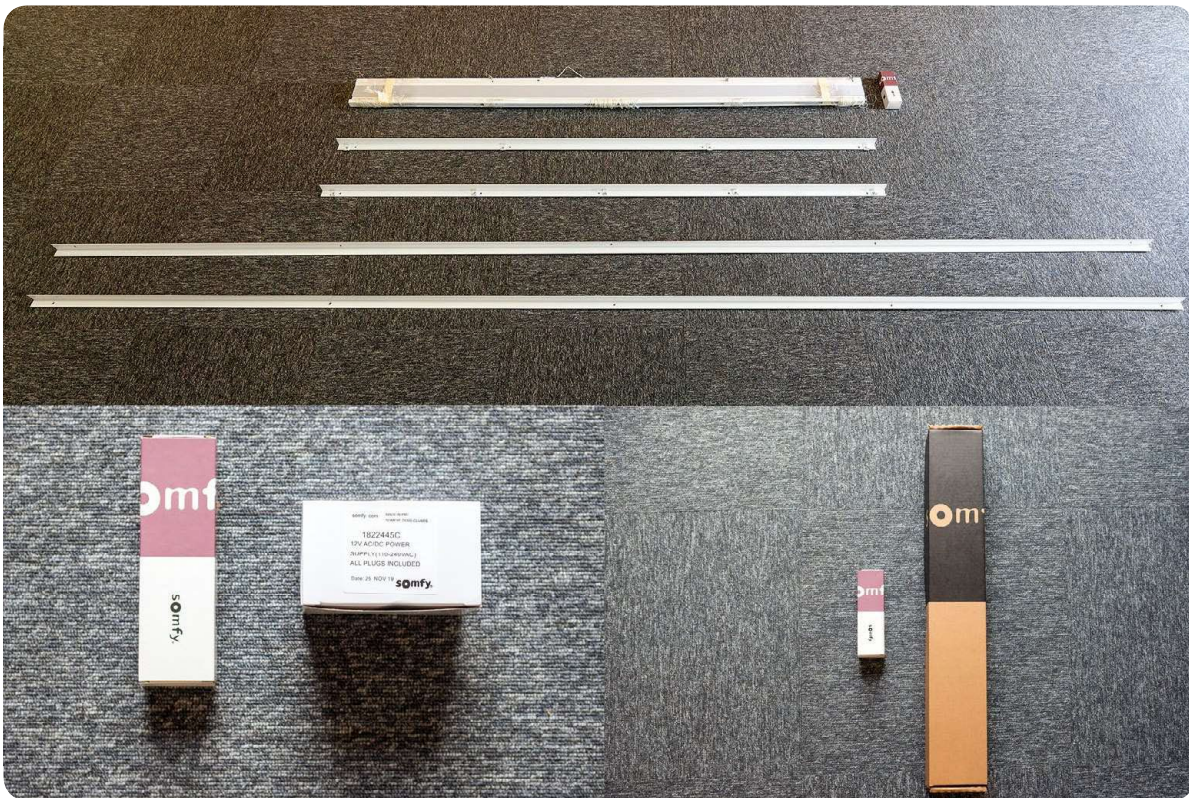
STEP

1

- 1.1 Unpack all the contents out of the box and lay them carefully on a flat surface.

Your box should contain:

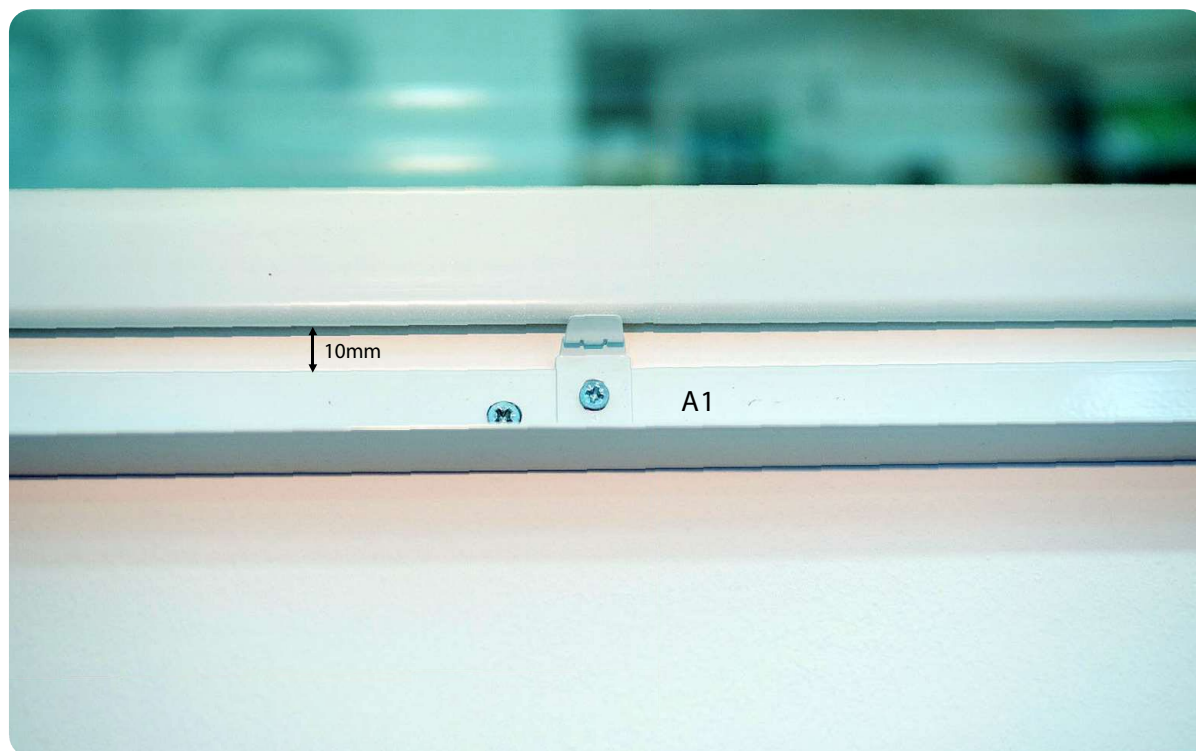
- 1 x Motorised Blind
- A1
- A3
- B1
- B2
- 1 x Handset (Optional)
- 1 x Power Supply (Battery / Solar or Mains) (Optional)



- 1.2 Identify the rails marked 'A1' and 'A3'. These rails are to be fitted first starting with rail 'A1' then moving on to rail 'A3'.
- 1.3 Rail 'A1' is classed as the motor rail, to which the motor side below fits to (the motor side is where the fabric is stacked / motor is located). Decide which side of the opening you would like the motor side to be positioned on and fit rail 'A1' accordingly.



- 1.4 If you have a perimeter trim already installed measure 10mm down from the bottom of this trim and position rail 'A1'. Make sure rail 'A1' is LEVEL and mark your drill positions with a pen through the pre-drilled holes already visible on the rail.
- 1.5 Take away the trim and drill your holes required through the plasterboard ensuring you DO NOT drill into the timber behind it.
- 1.6 Using the screws provided, screw the trim on securely. DO NOT over tighten the screws as this may damage the plasterboard.
- 1.7 Repeat the above steps 1.4, 1.5 and 1.6 for rail 'A3'.



- 2.1 Now locate the remaining side rails marked 'B1' and 'B2'.
- 2.2 Rest rails 'B1' and 'B2' on the already fitted rails 'A1' and 'A3' (see image below).



- 2.3 Secure the rail 'B1' first. Depending on the length of rail 'B1' it should fit nicely in-between rails 'A1' and 'A3'.
- 2.4 Secure rail 'B1' by firstly marking the drill positions with a pen through the pre-drilled holes already visible on the rail. Take away the trim and drill your required holes through the plasterboard ensuring you DO NOT drill into the timber behind it.
- 2.5 Using the screws provided, start at the middle of rail 'B1' and screw the trim on securely so all ends are securely fixed. DO NOT over tighten the screws as this may damage the plasterboard.

- * **CLEANING CHECK** – Once all the rails are now securely fixed into place, before fitting the Blind it is important to clean any debris from the top of the rails so the Blind can run smoothly. Not cleaning the rails may cause an obstruction which could potentially cause damage to the Blind.



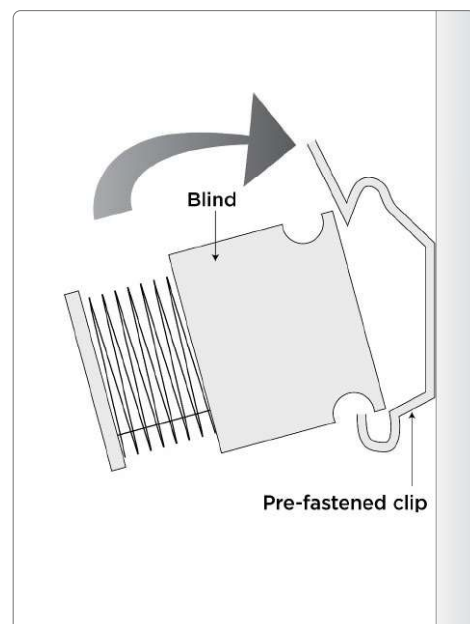
- 3.1 Unwrap the Blind carefully and lay it out on a clean flat surface. (See image below).



- * **ORIENTATION CHECK** – On the motor side of the Blind, please ensure the metal nylon tensioners are facing upwards towards the ceiling so the Blind is facing the correct orientation (see image of a nylon tensioner below). The tensioners should not be visible from ground level once the Blind is fitted.

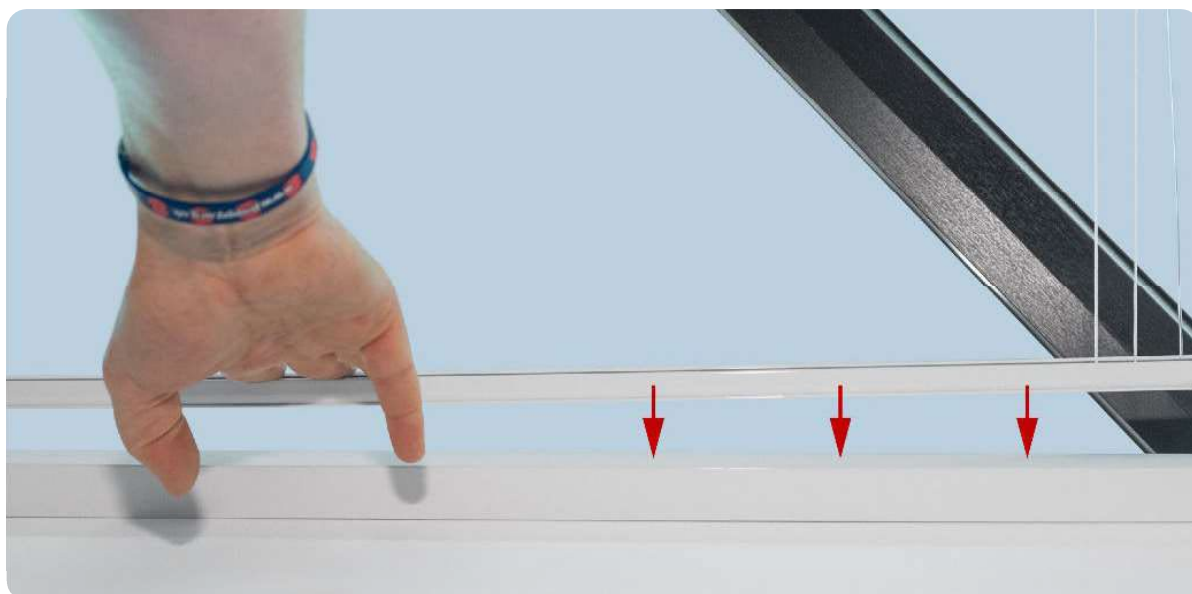


- 3.2 Fit the motor side of the Blind first to rail 'A1'. Start at one end and clip the motor side of the Blind into rail 'A1' as per the diagram and image below. We recommend resting the Blind on the side rails 'B1' and 'B2' whilst doing so. Begin clipping at one end and make your safely way across. Moderate force is required.





- 3.3 Now move your ladders safely across to the opposite side of the lantern so you are facing rail 'A3'. Leave enough space so you are at arm's length to clip in the end profile in.
- 3.4 Rest the profile on the side rails 'B1' and 'B2'. The side requires considerable force to clip in the end profile to the rail 'A3' brackets securely. It will seem short on length (80mm) but this is normal. Start in the middle of the rail and work your way outwards to each end making sure each time it clips into the bracket securely (see image below).



- * FITTING CHECK – force the end profile into rail 'A3' brackets and push hard to click into place. Work from the middle outwards, it will make a loud positive 'clicking noise' as it secures into place.



- 3.5 The Blind will now be under the correct tension. Get a qualified electrician to connect the power to the Blind. Once the power is active the Blind will jog once (back and forth motion) and is now ready to be operated from the handset.
- 3.6 Calibrate the Blind by pressing the down arrow on the handset to fully close, then the up arrow to full open. The 'my' button stops the Blind. This may need to be done several times to calibrate.
- 3.7 The Blind is now ready for normal operation.

Fitting the optional Solar & Battery Pack.

*** WARNING –** The battery pack must be mounted under the blind. This avoids any excessive heat from direct sunlight interfering with the battery's safety and performance. Please see manufacturer's instruction provided for further guidance (see image below).

4.1 Before installing the battery pack, use the black rubber gromets provided and place into to the pre-drilled hole in the centre of the L-profile rail (see image below).



4.2 Thread the motor wire through the hole from the top of the blind.

*** OPTIONAL SOLAR PANEL –** If using a solar panel, pass the cable through the top of the black grommet as the battery will need to connect to the solar panel directly. Join the solar panel connector to the battery pack. The solar panel can be fitted to the glass with sticky pads or left to rest on the Blind stack if secure enough (as per the below image).



4.3 Now connect the battery pack to the Blind. Once connected the Blind will jog once (back and forth motion) and is now ready to be operated from the handset.

4.4 Calibrate the Blind by pressing the down arrow on the handset to fully close, then the up arrow to full open. The 'my' button stops the Blind. This may need to be done several times to calibrate.

4.5 The Blind is now ready for normal operation.

TROUBLESHOOTING

1 The Blind did not do an initial jog when powering up?

Mains Power: Check the power supply is live. If the power supply is live and the Blind still did not jog (one forward and one backward motion) check the polarities for the power supply match the polarities of the motor e.g black tracer wire on the motor and power supply are negative polarity.

If this does not resolve the issue, there could be an issue with either the power supply it self or even the motor.

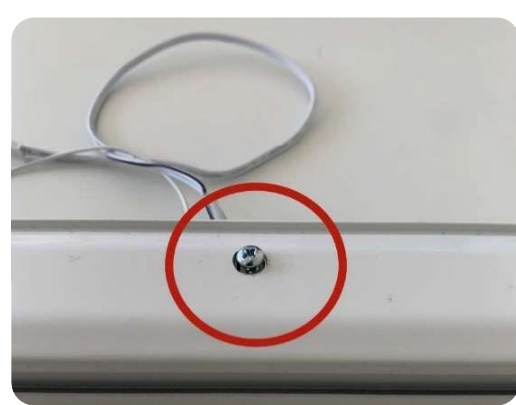
Battery & Solar Power: Check the battery connector (and solar panel if applicable) is correctly attached to the Blind connector. The solar panel must also be correctly connected to the battery in order for it to charge.

2 The Blind jogs but the Handset is not working?

Does the Handset show an indication light? If No please change the battery in the remote. If Yes then the Handset will need repairing see below:

To pair a new Handset:

1. Hold the reset button situated on the top of the Blind frame firmly till the Motors jogs once (circled in red in the image).

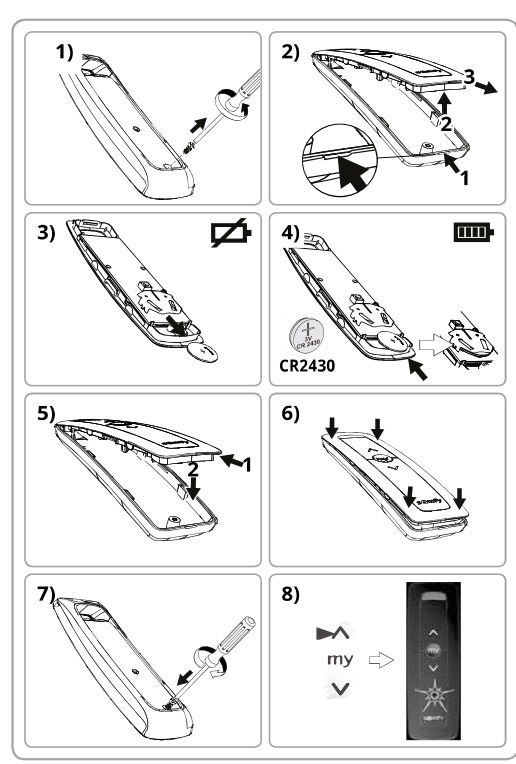


*** ATTENTION -** Do not hold the reset button on the motor for more than one job (one forward and one backward motion).

2. Pair the new Handset by pressing the red programme button on the back of the Handset immediately after. The Blind will jog once as confirmation.
3. The Handset & Motor should now be successfully paired.

Changing The Battery:

Please see instructions to the right, the Handset requires CR2032 batteries.



TROUBLESHOOTING

- 3 When the Blind is operating it is making a scraping / juddering sound?

Check the Railing edges, they may require cleaning off any debris, dust or grit with a damp cloth / baby wipes.
- 4 The Blind is not opening / closing straight?

Check the Railing edges, they may require cleaning off any debris, dust or grit with a damp cloth / baby wipes.
- 5 **The Blind is not fitting to Side A1 (motor side)?**

The Blind is being fitted facing the wrong orientation. Please see further details on Page 7 of this guide.
- 6 **The Blind is not fitting to Side A3 (static side)?**

This side requires considerable force to clip in the bracket securely. It will seem short on the length (80mm) but this is normal. Start in the middle and work your way outwards making sure each time it clips into the bracket securely.
- 7 The Screws, Brackets or Fixings are missing from the package.

Please contact customer support to re-order.
- 8 The Fabric of the Blind is damaged.

Please contact customer support.
- 9 The Handset is missing from the box.

Please contact customer support to re-order.
- 10 The Blind is getting stuck in operation?

The frame has been installed incorrectly. Measure both ends and the centre of the frame, all measurements should be equal - a maximum of 2mm tolerance is allowed. Reduce the packers from either side if this is an option, if not please contact customer support.
- 11 One of the tension Cords has snapped?

Please contact customer support.
- 12 There is a burning smell / smoke coming from the Motor side of the blind?

Turn off Power to the Blind immediately. Ensure nothing is smouldering / has caught fire. Get a qualified electrician to check cabling – the likely cause is the supply to the blind is wrong (Motor requires a 12v supply).
- 13 The Blind has fallen down?

The Blind was not clipped in securely on Side A1 & Side A3 and needs re-fastening. Please see Step 4 above for more details.

SAFETY & LIABILITY

Furthermore, the installer must comply with standards and legislation in the country in which the product is being installed, and inform their customers of the operating and maintenance conditions of the product. They must give them this guide. Any use outside the sphere of application defined by Newblinds.co.uk is forbidden. Doing so will void the warranty and release Newblinds.co.uk of all its liability, as would a failure to comply with the instructions given herein. Never begin installing without first checking the compatibility of this product with associated equipment and accessories.

Warning: Read the instruction guide to become familiar with the features of this product (Blind & Fittings) before operating it. Failure to operate and fit this product in a safe and responsible manner could result in damage to the product, personal property and cause serious injury. A qualified electrician / professional is needed for full installation. Furthermore, the installer must comply with standards and legislation in the country in which the product is being installed, and inform their customers of the operating and maintenance conditions of the product. They must give them this guide. Any use outside the sphere of application defined by Newblinds.co.uk is forbidden. Doing so will void the warranty and release Newblinds.co.uk of all its liability, as would failure to comply with the instructions given herein. Never begin installing without first checking the compatibility of this product with associated equipment and accessories. This product is not intended for use by children. Do not install it with small children or pets around. Do not use this product externally or in wet / moist conditions. It should be used only indoors in a dry suitable environment. Keep the Handset out of reach of children. Never drop, knock, puncture or immerse the Handset in liquid. It is essential to read and follow all of the instructions and warnings in this fitting guide prior to assembly and setup or use, in order to operate the product correctly and avoid damage or serious injury. The imagery used are indicative of style only and are not contractually binding. The document and its contents remain property of Copyright © 2021 SONA SHADES LTD.