

How to fit and operate your 25mm Venetian Blind

Pack Contents...

Please check you have all the items that are supplied with your Venetian blind.

Venetian Brackets:
quantity to suit the width of your blind



Cord Accumulation Device:
(1 or 2 dependant on blind size)



Blind: 1



Removable wand control for Venetian blinds.

! Read these instructions carefully before installing this blind. Blind headrails should not be installed less than 1.5m from the floor.

Fitting your Venetian Blind

Important, please ensure you have your fixing brackets before you begin.

Your blind installation brackets are packed separately in bubble wrap at the end of the tube. Check you have removed them before throwing away the transit tube.

Your venetian blind is fitted in three simple stages. Please complete them in the correct order when installing your blind.

1. Fit the installation brackets 2. Attach the Venetian blind 3. Install the cord accumulation device

Stage 1: Fit the installation brackets

1 Fitting your Venetian blind outside the window recess

NOTE: Headrails should not be installed less than 1.5m from the floor.

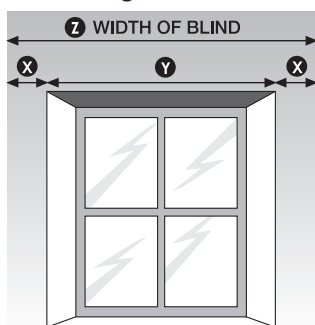
Please ensure the middle of the rail is precisely in the centre of your windows, the measurements at point (X) need to be identical.

If you need to calculate (X)

- Measure the width of the window (measurement Y) note down this figure.
- Measure the width of the Venetian blind (measurement Z) note down this figure.

Take measurement Y away from measurement Z and divide the figure by 2 to get measurement X.

Now follow step 2 then please follow the instruction for **Face Fixing**.

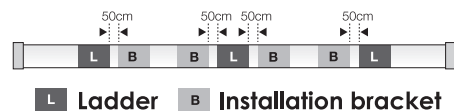


Fitting your Venetian blind inside the window (recess fitting)

You must decide whether to **Face Fix** or **Top Fix** your Venetian blind.

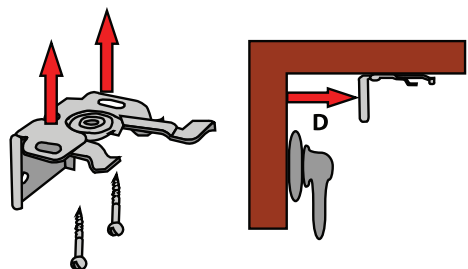
- **Top Fix** your Venetian blind if you have uPVC window frames or there are obstructions like handles.
- **Face Fix** your Venetian blind if you want to fit your installation brackets to the window frame.

2 Place your Venetian blind in the fitting position and tilt it forward to show the inside of the headrail. You must leave at least 50mm each side of any of the ladders when you fit the installation brackets.



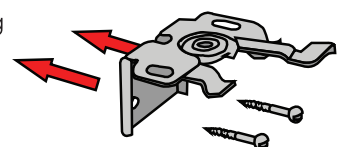
3 Top Fixing

Measure the distance that your handles protrude from the window frame (D). Mark this measurement on the top of the recess and use this to position the back of the installation bracket. Mark the position of the holes (H) and attach using appropriate fixings for your wall construction.



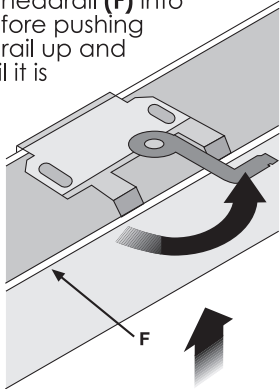
Face Fixing

Position the installation bracket with the swinging arm rotated facing towards you. Mark the holes (H) and attach using appropriate fixings for your wall construction.

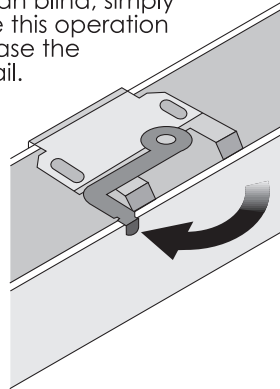


Stage 2: Attach the venetian blind

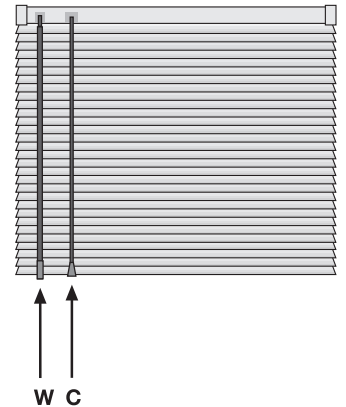
- 1** Push the swinging arm anti-clockwise rotating it as far as it will go. Clip the Venetian blind over the installation bracket, first pushing the front lip of the headrail (F) into place before pushing the headrail up and back until it is level.



- 2** Holding the Venetian blind headrail firmly, push the swinging arm clockwise so it rotates until it locks into place. If you need to remove the Venetian blind, simply reverse this operation to release the headrail.



- 3** To raise or lower the Venetian blind, use the control cord (C). To tilt and adjust the angle of the aluminium slats twist the wand control (W).



Stage 3: Fitting your cord accumulation device

WARNING Children can strangle if this safety device is not installed. Always use this device to keep cords out of the reach of children.

1. The cord accumulation device shall be installed as close to the headrail as possible and, in all cases, not less than 1.5m from the floor.

2. To fit, mark the two holes (H2) and secure with the correct fixing for your wall construction.

3. When the blind is raised ensure any excess cord is stored on the accumulation device. The cord should be accumulated by winding in a figure of eight motion as shown in figure 1.

On larger blinds with four cords, two accumulation device might be necessary. If two accumulation devices are supplied please fit these 100mm apart again ensuring that both of these devices are no less than 1.5m from the floor.

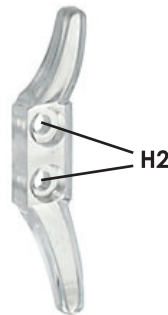


Fig. 1



Young children can be strangled by loops in pull cords, chains, tapes and inner cords that operate the product.

To avoid strangulation and entanglement, keep cords out of the reach of young children. Cords may become wrapped around a child's neck.

Move cots and furniture away from window covering cords.

Do not tie cords together. Make sure cords do not twist and create a loop.

Operating your venetian blind

Operating your venetian blind is simple. Just follow the instructions below.

To raise your Venetian blind, use the control cord (C). When the blind is raised, always store any released cord on the accumulation device by winding it in a figure of eight style, up from the bottom across sideways to the opposite side on the top, then back down gain to the opposite side on the bottom.

To lower your Venetian blind back down again, pull the control cord (C) at an angle across the front of the blind to release the cord lock, then let the control cord slide through your fingers.

To tilt and adjust the angle of the aluminium slats, twist the wand control (W).

Note: The aluminium slats must be open when raising or lowering the Venetian blind.

Note: Your aluminium venetian blind is fitted with a breakaway cord tassel. If this becomes detached during operation (figure 2) it can very easily be clicked back together by aligning the two sides and gently pushing together.

Note: Modification of the design or configuration of the blind or it's integral or non-integral component parts shall not be made without consulting the manufacturer.



Fig. 2