

somfy®

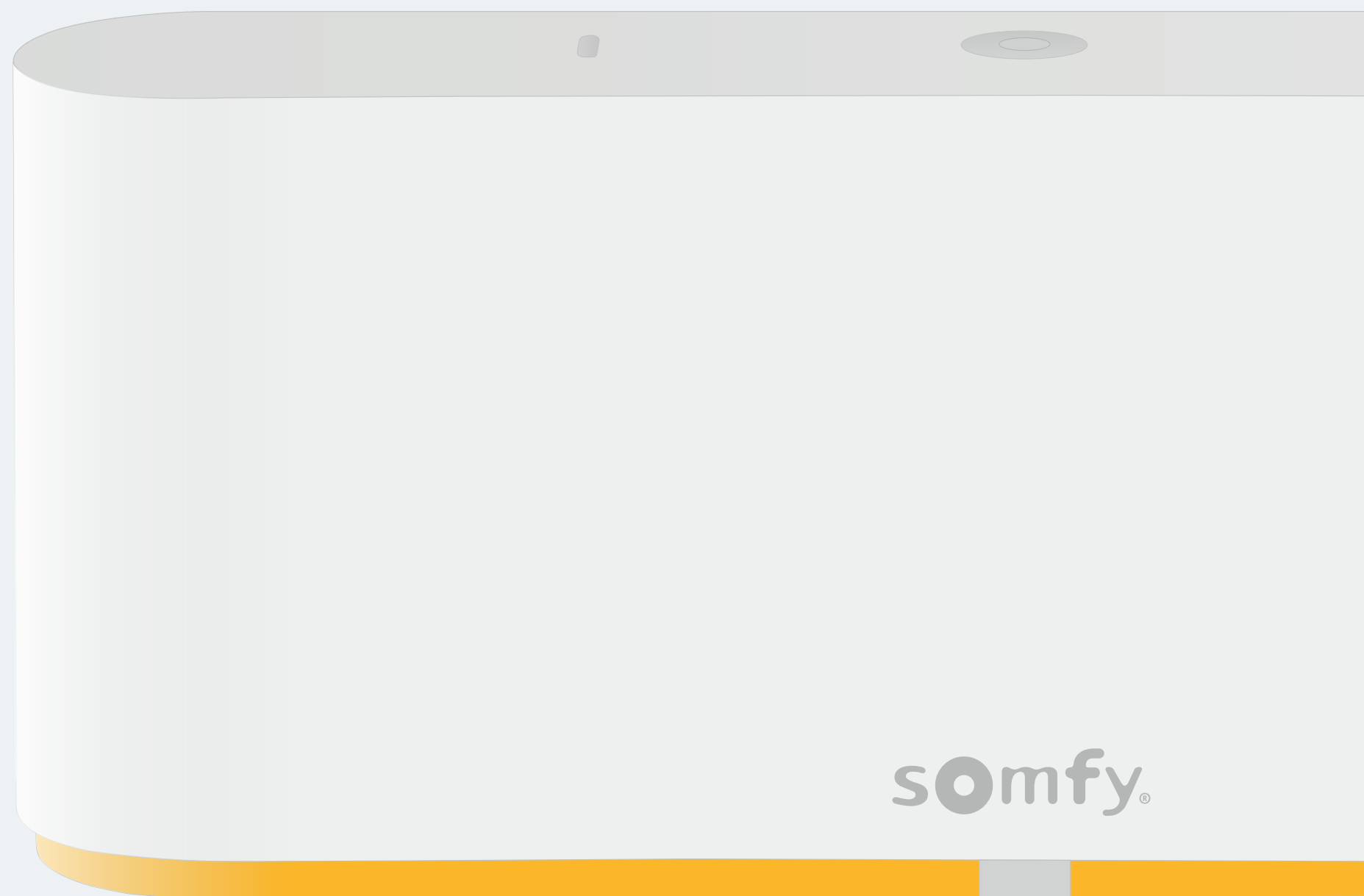
# TaHoma switch

Installation guide

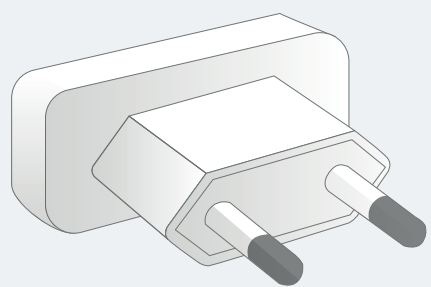
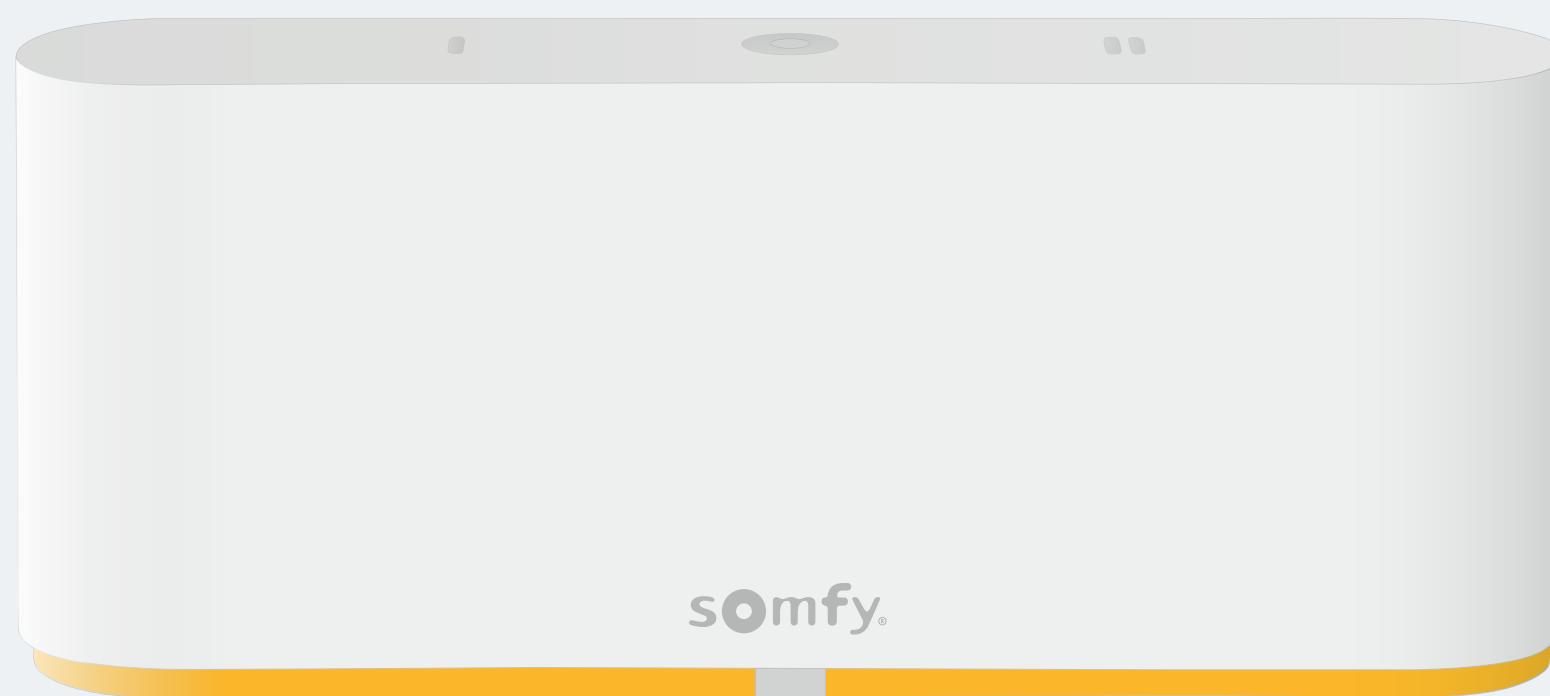
EN

# Welcome !

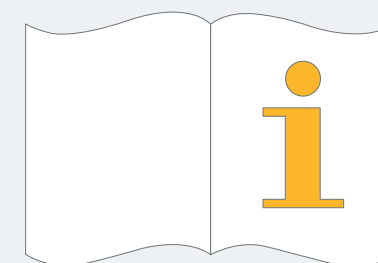
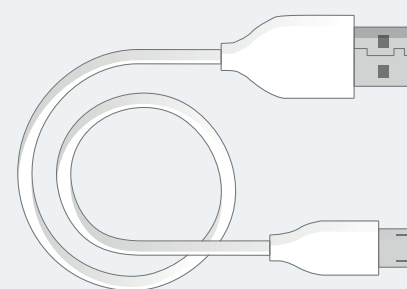
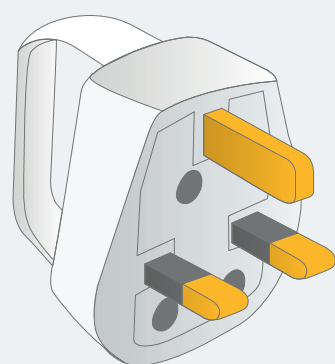
Start TaHoma switch  
in a few steps



# Pack content



or



# Install TaHoma<sup>®</sup> app

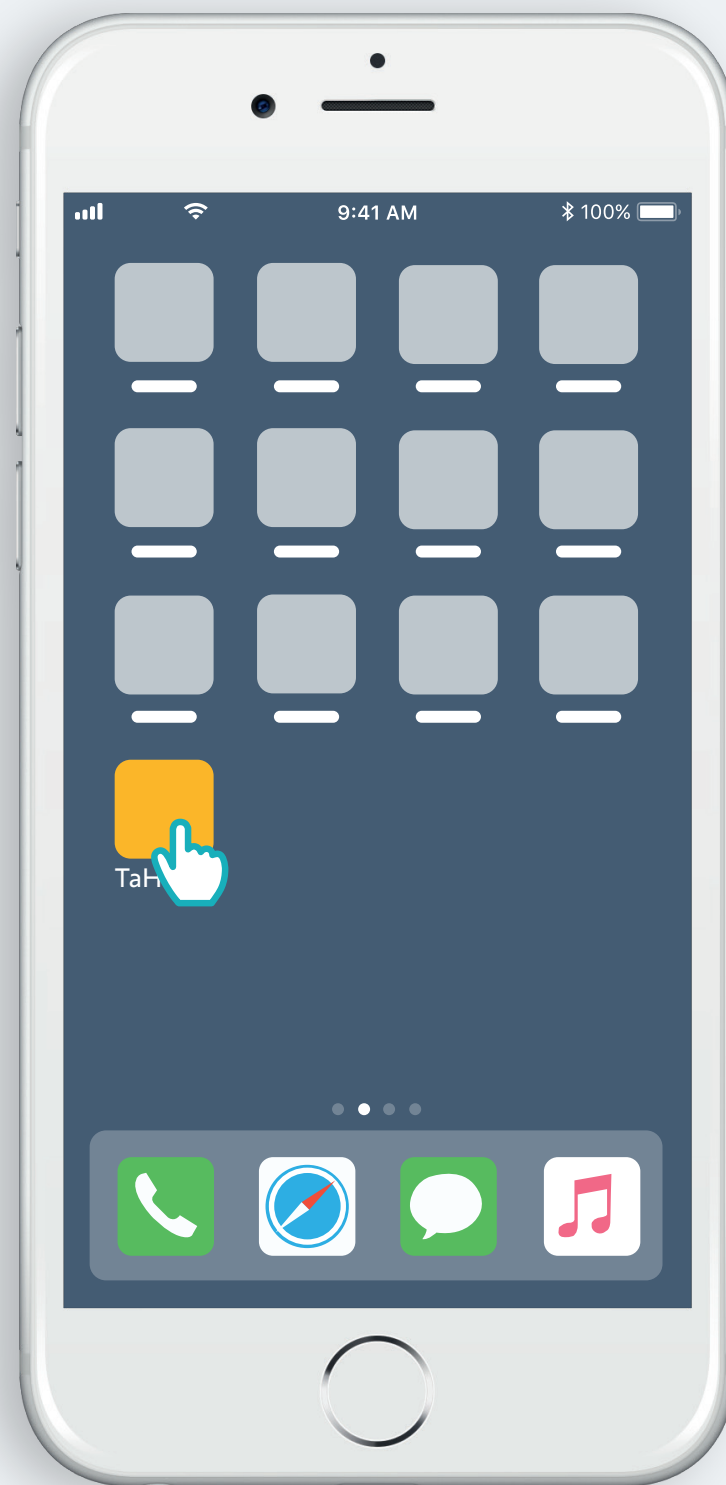


Follow instructions

TaHoma<sup>®</sup> installed

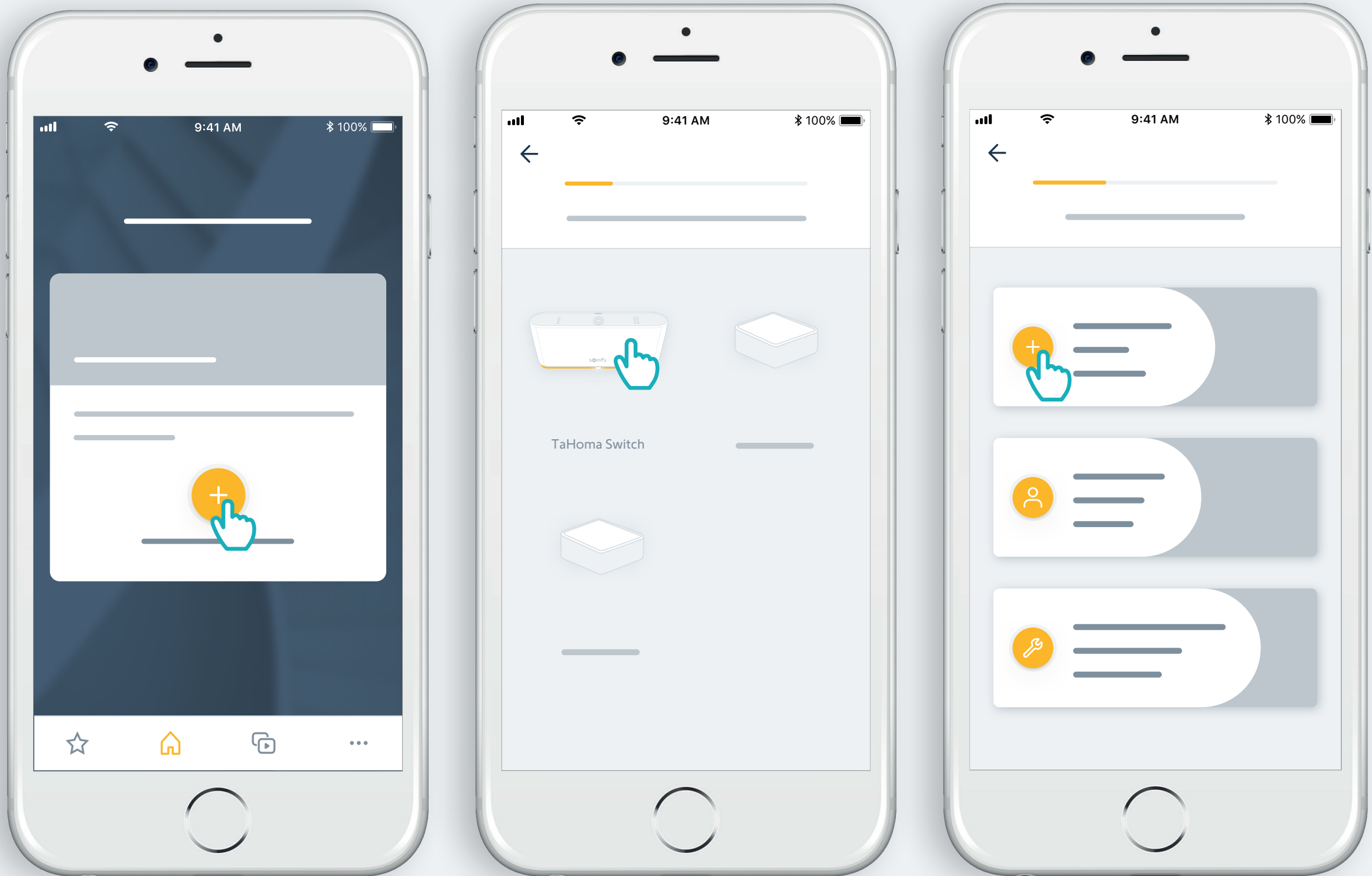
1. Launch TaHoma<sup>®</sup> app

# Start



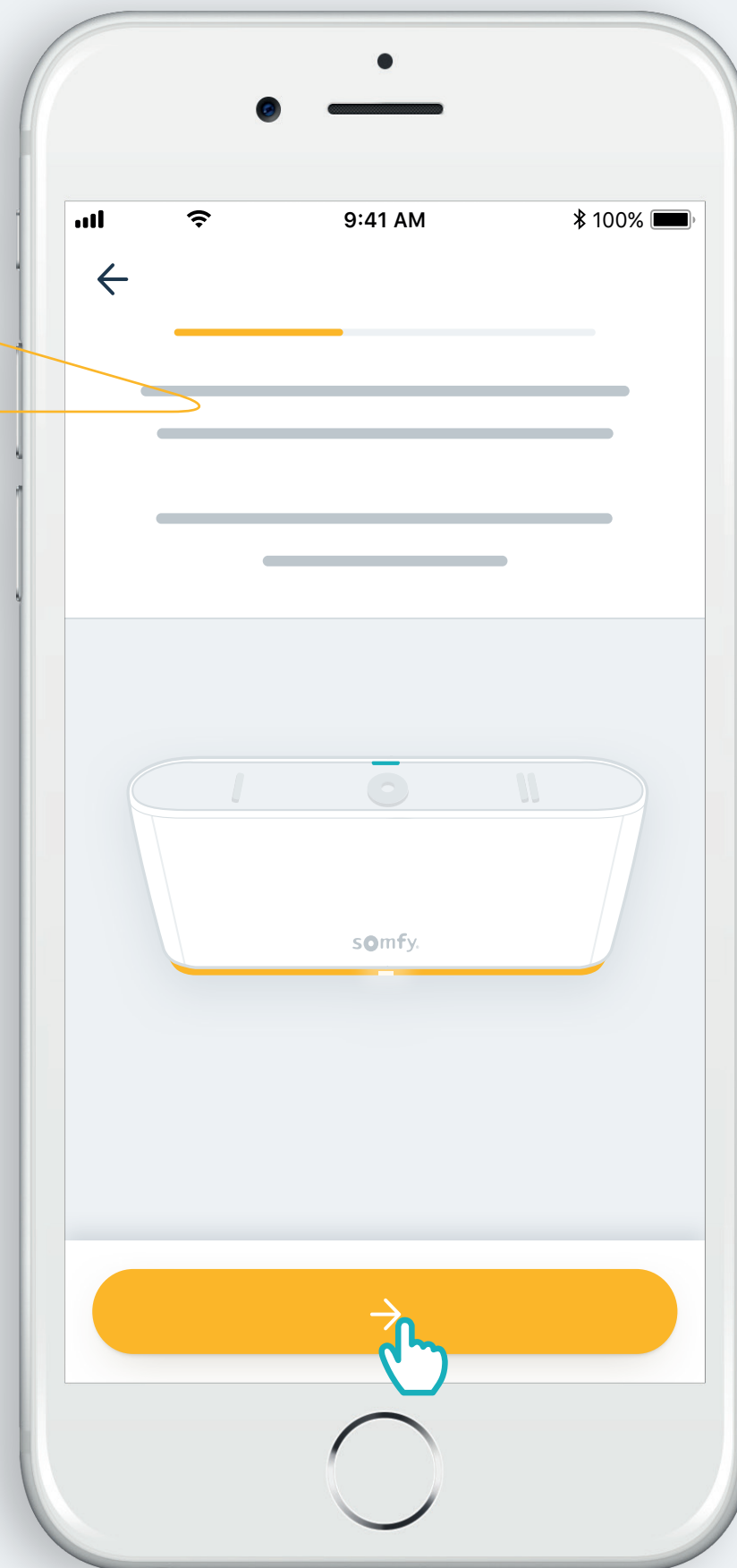
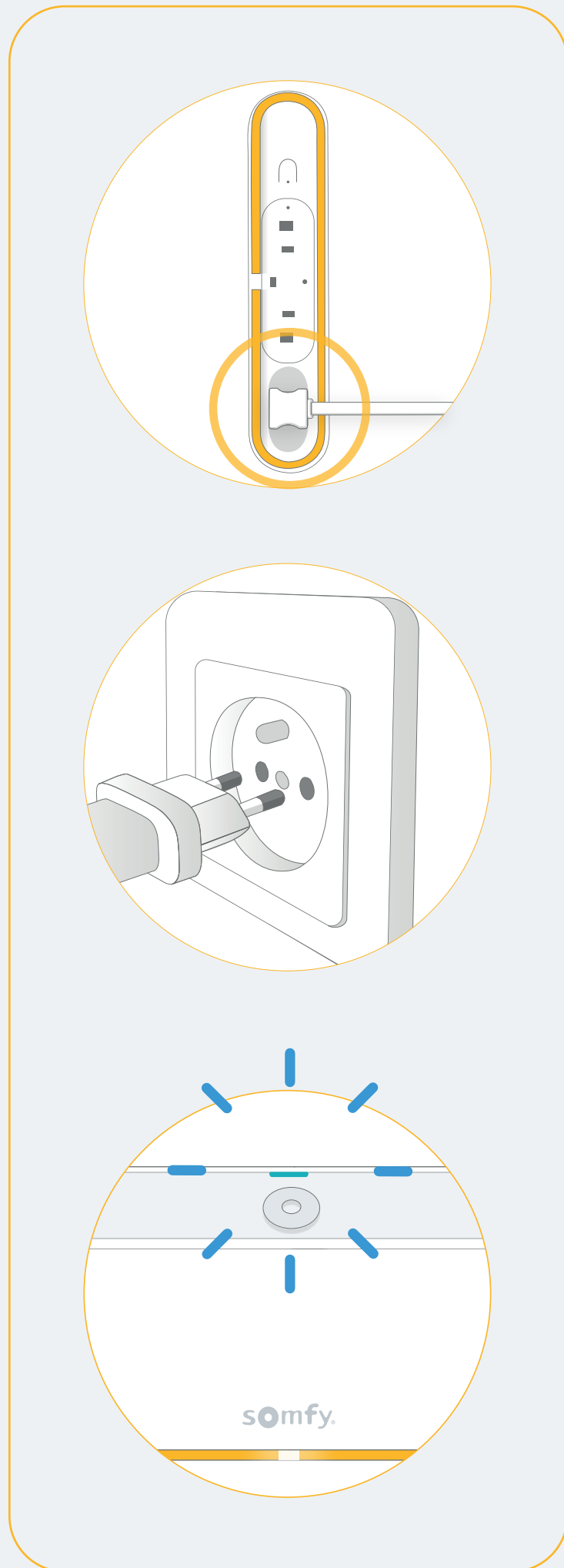
Open TaHoma<sup>®</sup> app

# Start



Start TaHoma switch installation

# Plug power supply

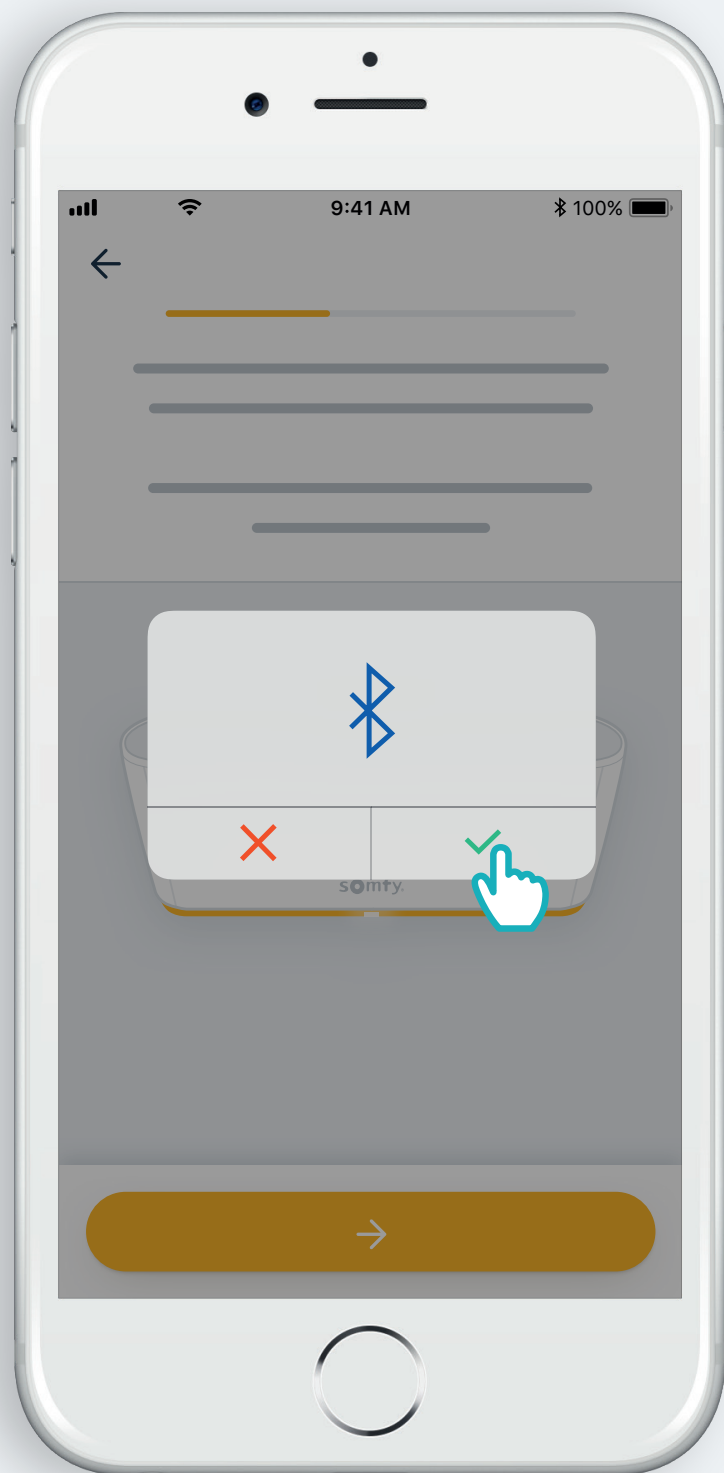


If the light is not flashing blue,  
press the round button for 10 seconds

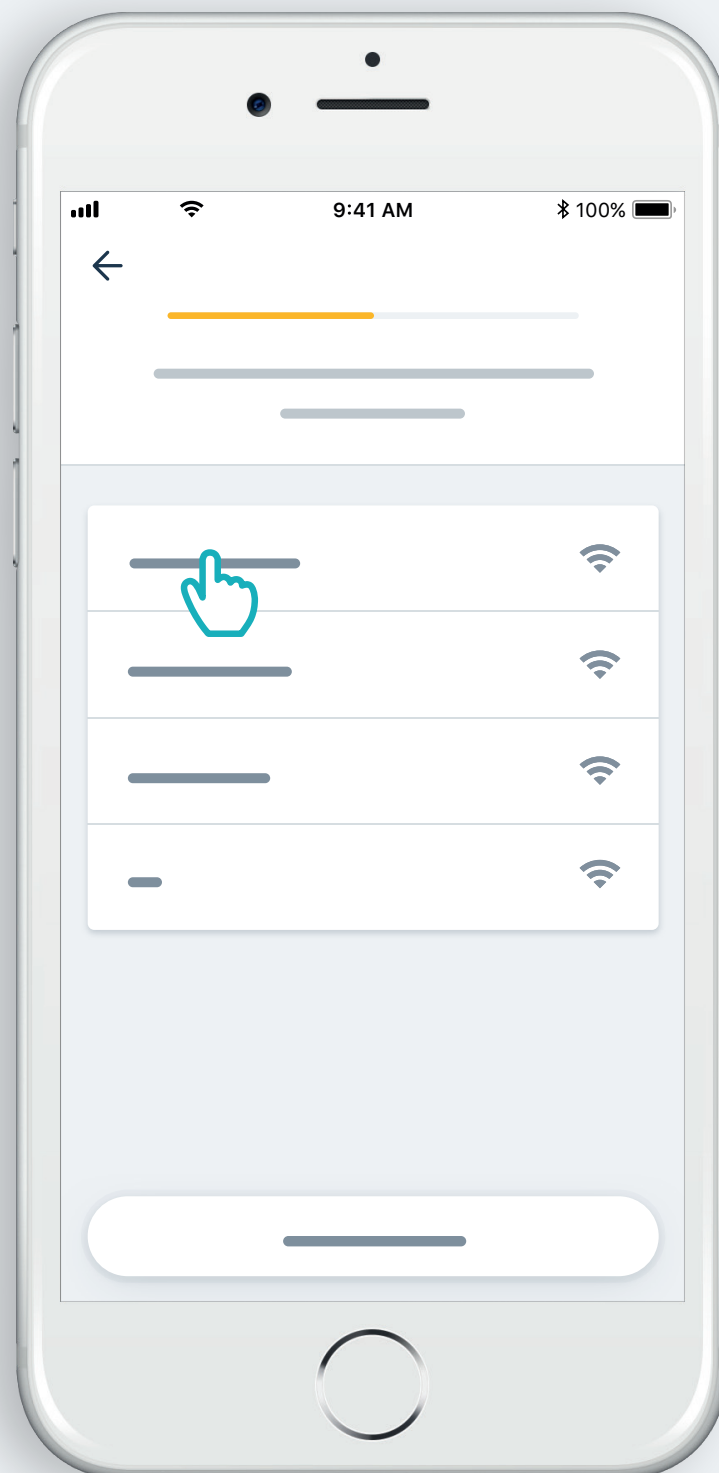


# Connect to the internet

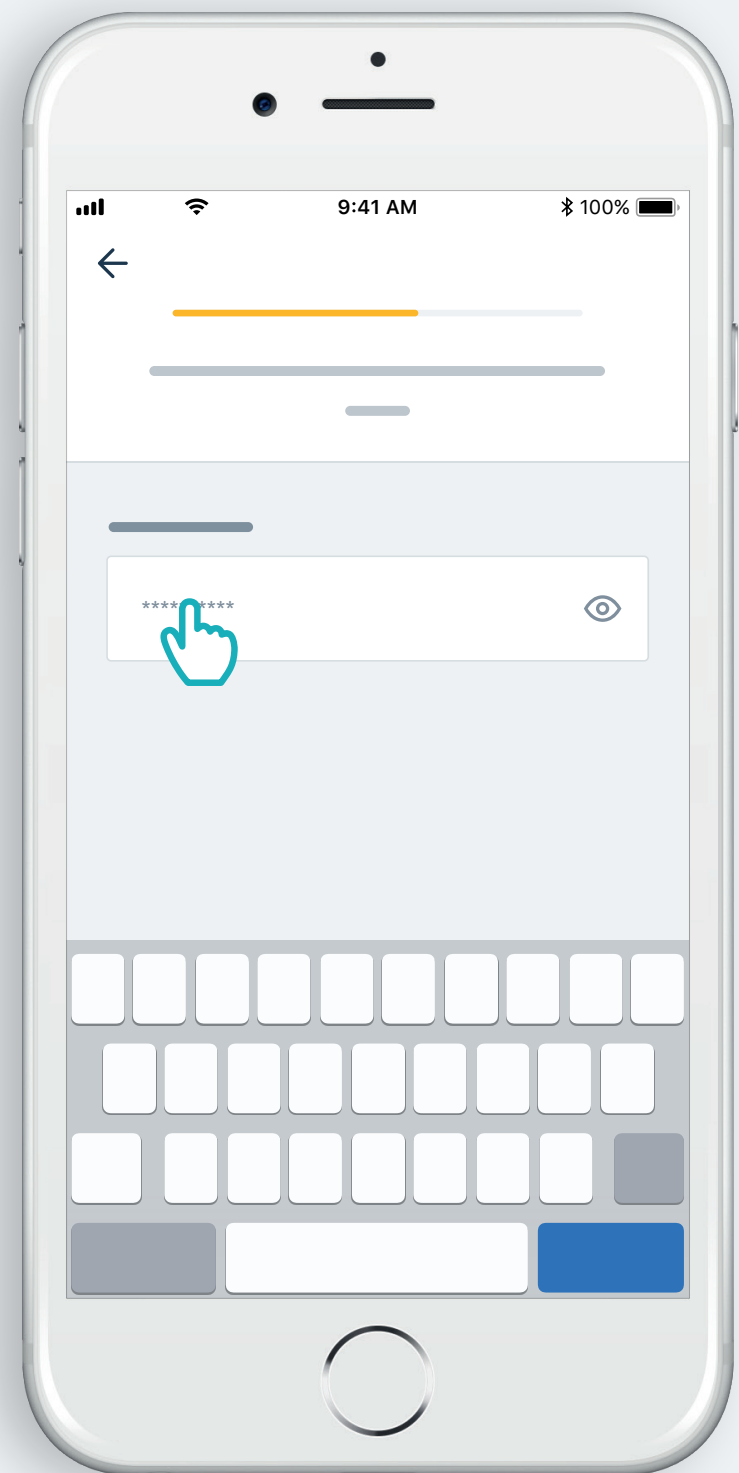
Your WiFi network must be in 2.4 GHz and secured with a password.



Accept Bluetooth

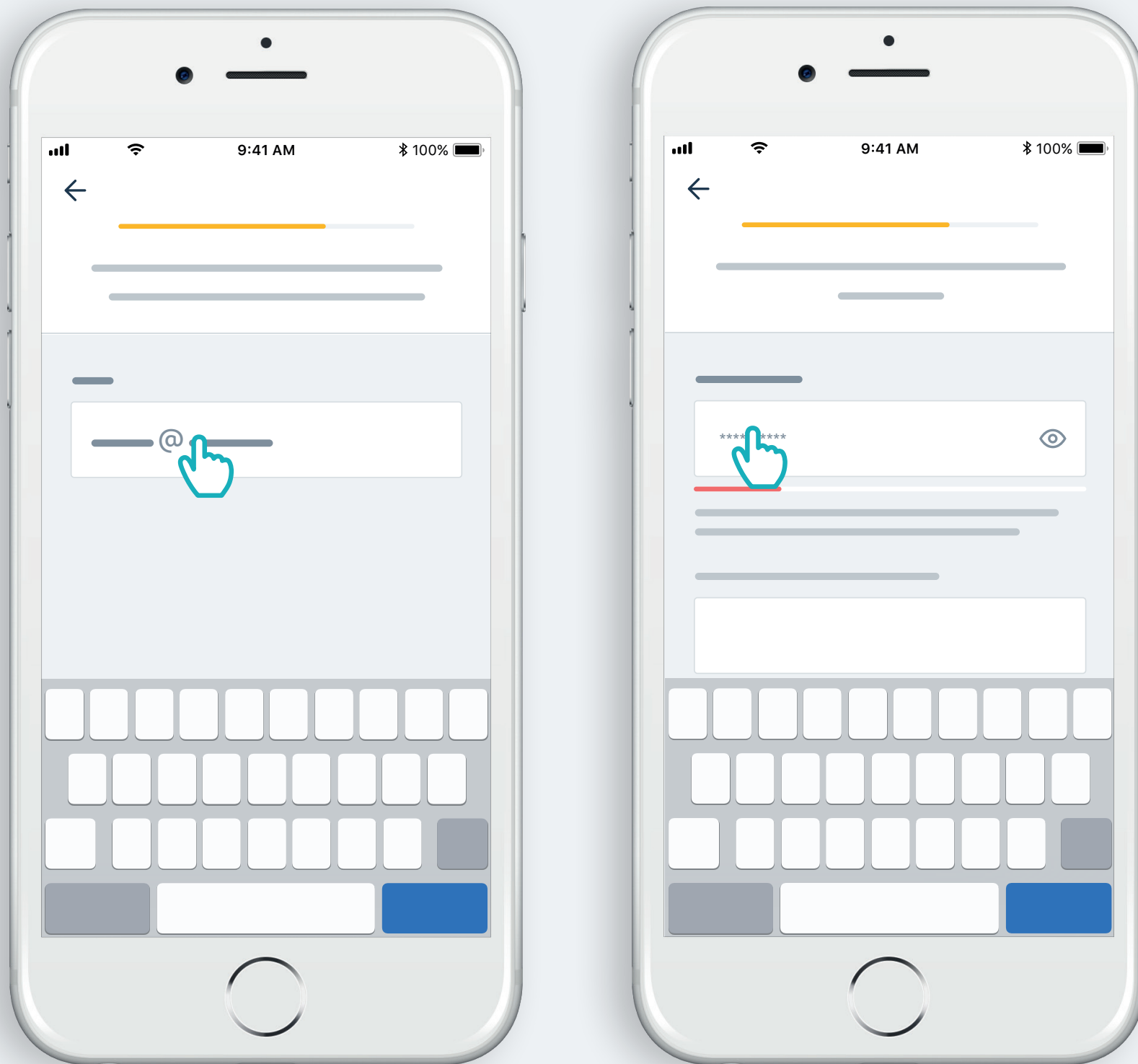


Select WiFi and enter password



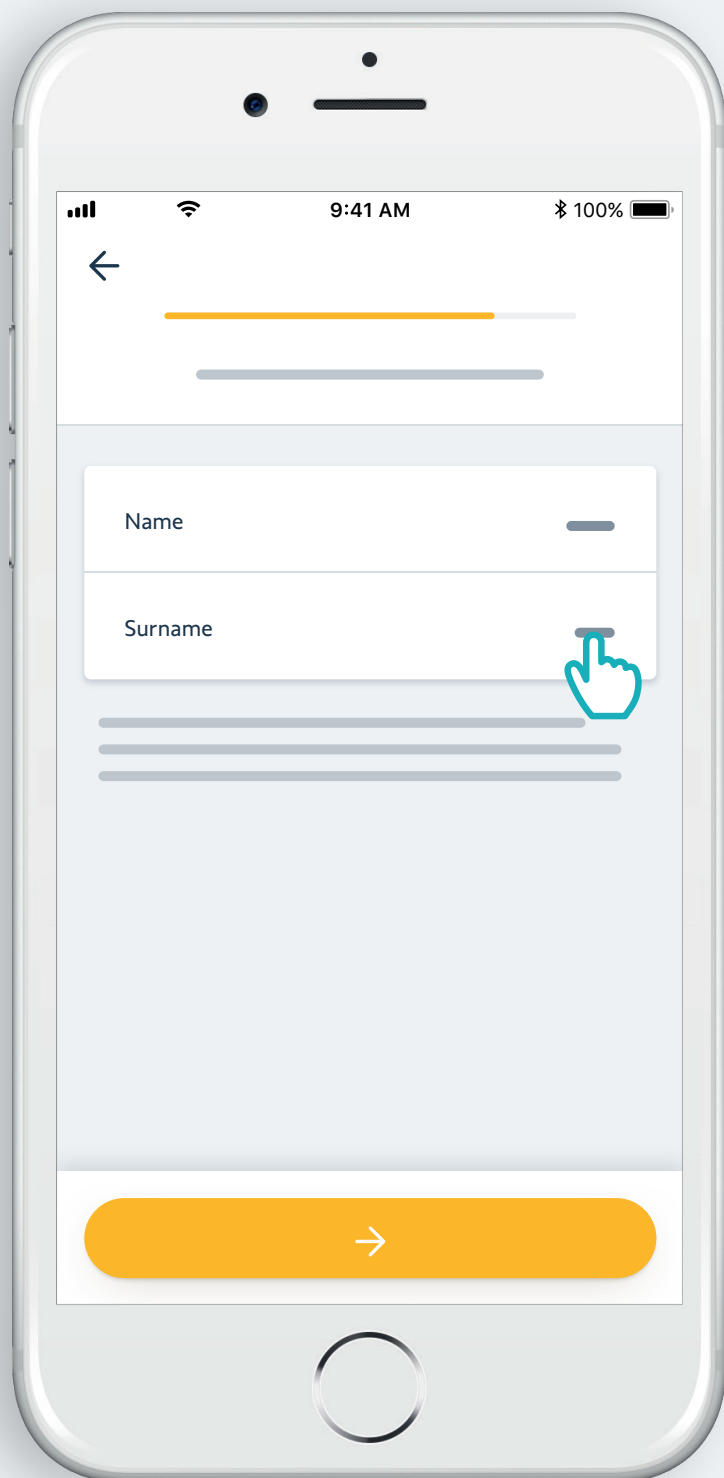
2. Create your TaHoma<sup>®</sup> account  
or Log in

# Create your TaHoma<sup>®</sup> account or Log in

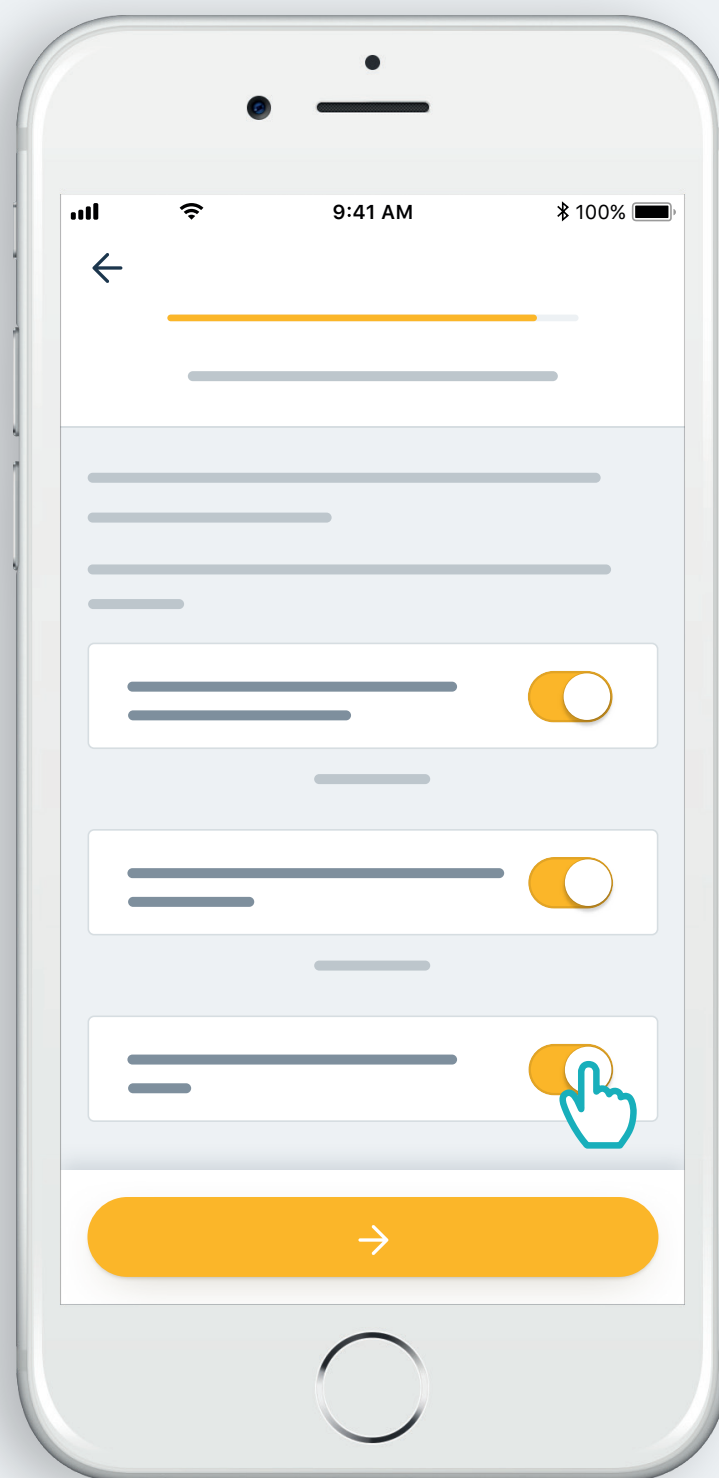


Enter your email address and password

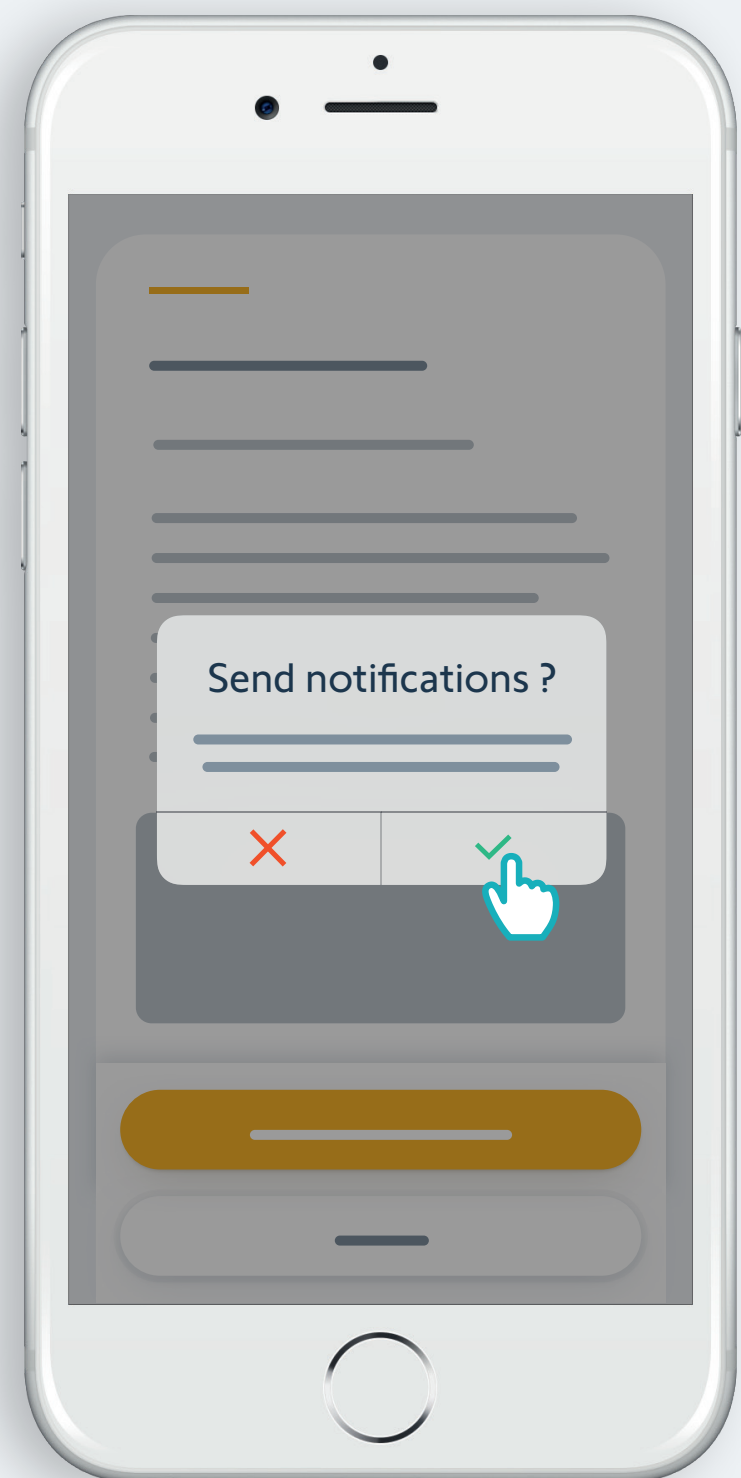
# Follow the instructions



Enter your name

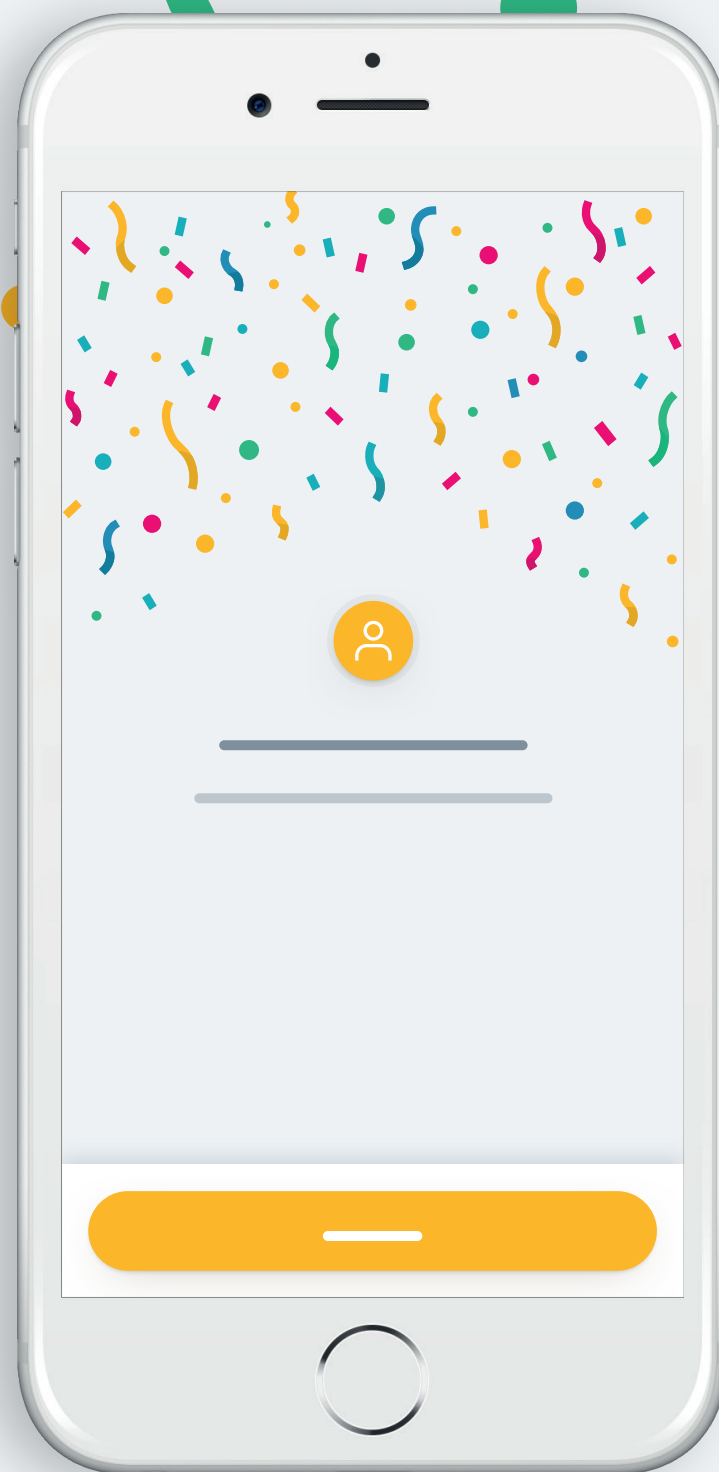


Accept Terms and  
Conditions



Authorize  
notifications for  
better experience

Congratulations,  
TaHoma switch is ready to use!



**Now :**

- Add products,
- Configure the buttons of TaHoma switch,
- Discover all the possibilities offered by the app!

somfy®

5156700A