

# system41

## 41 mm RETRACTABLE INSECT SCREEN

We produce a series of different sizes and designs of Cassette Roller Insect Screen Systems, developed to suit different design requirements and to meet the needs of demanding markets worldwide.

All the systems have their own distinctive cassette style and combine with a number of interchangeable profiles to create a unique series of retractable screening solutions.

Providing innovative long lasting designs, as a result of studious efforts to optimise performance and efficiency, System Retractable Insect Screens are made from fine micro-extruded aluminium profiles combined with durable nylon accessories and the high quality weatherproof fibreglass mesh from Phifer Wire Products Inc. And now, every retractable system features the optional Brake for use in both vertical and horizontal applications.

The systems are supplied in convenient bar lengths, according to the profile, of 4.7 mtrs (185") 5 mtrs (197") or 6 mtrs (236"). This allows the fullest optimisation of the system with the minimum of waste.

Guide profiles feature pre-inserted brushpile and the cassette is pre-assembled and complete with mesh fixed to a centre tube and sliding bar.

The major part of preparation is made with one simple cut through the cassette and with simple square cuts to the guides, you have cassette, tube, screen and guides neatly cut for immediate installation. Some systems are also supplied as pre-assembled modules adaptable to the required dimensions and complete with all the accessories.

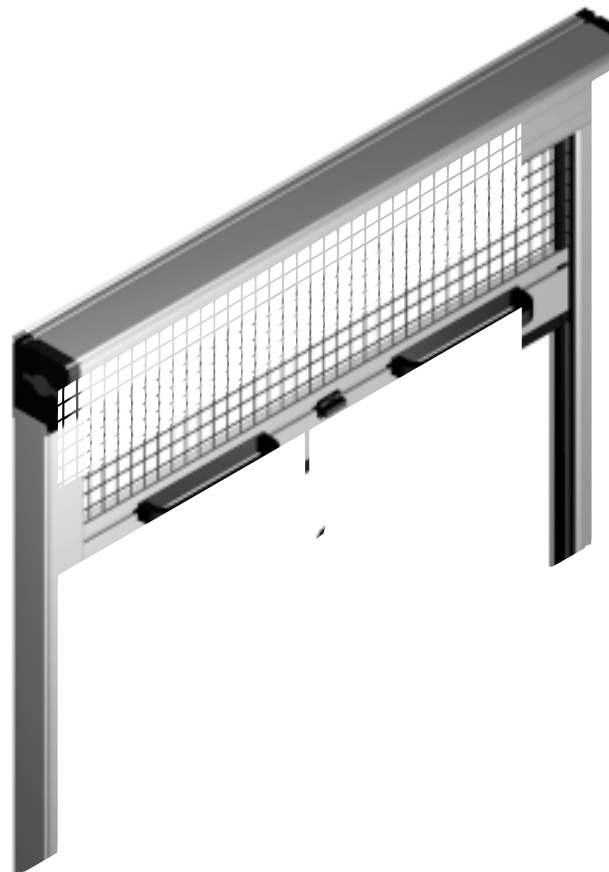
Our Retractable Insect Screen systems are able to be installed on windows and doors, either inside the opening or front fixed, and the appropriate accessory kits include all the components necessary for the different mounting options.

Despite the simplicity of the systems, there are enough options to allow flexibility of choice and quick installation on almost any type of existing frame – providing solutions for both residential and commercial applications.

Each system can be made in a number of window screen configurations or door screens simply by changing the accessories but using the same cassette and inter-changeable guides. Our individual technical data sheets show the combinations and options available in each system.

Compare the versatility and quality with other systems on the market and you will see the difference.

Only first quality materials are used to make our Retractable Insect Screen Systems, so whichever system you install, you know you will get the same high standard of quality and reliability.



## COLOURS AVAILABLE

Anodized Silver* 0030	White* RAL 1013
Bronze 0040	Black* RAL 9005
White RAL 9010	Brown RAL 8014

Please, check the above colours on a RAL palette.

\*Subject to extended lead time and minimum order quantities.

Above listed data may change without notice.

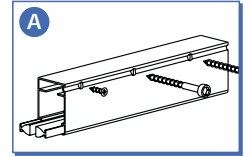
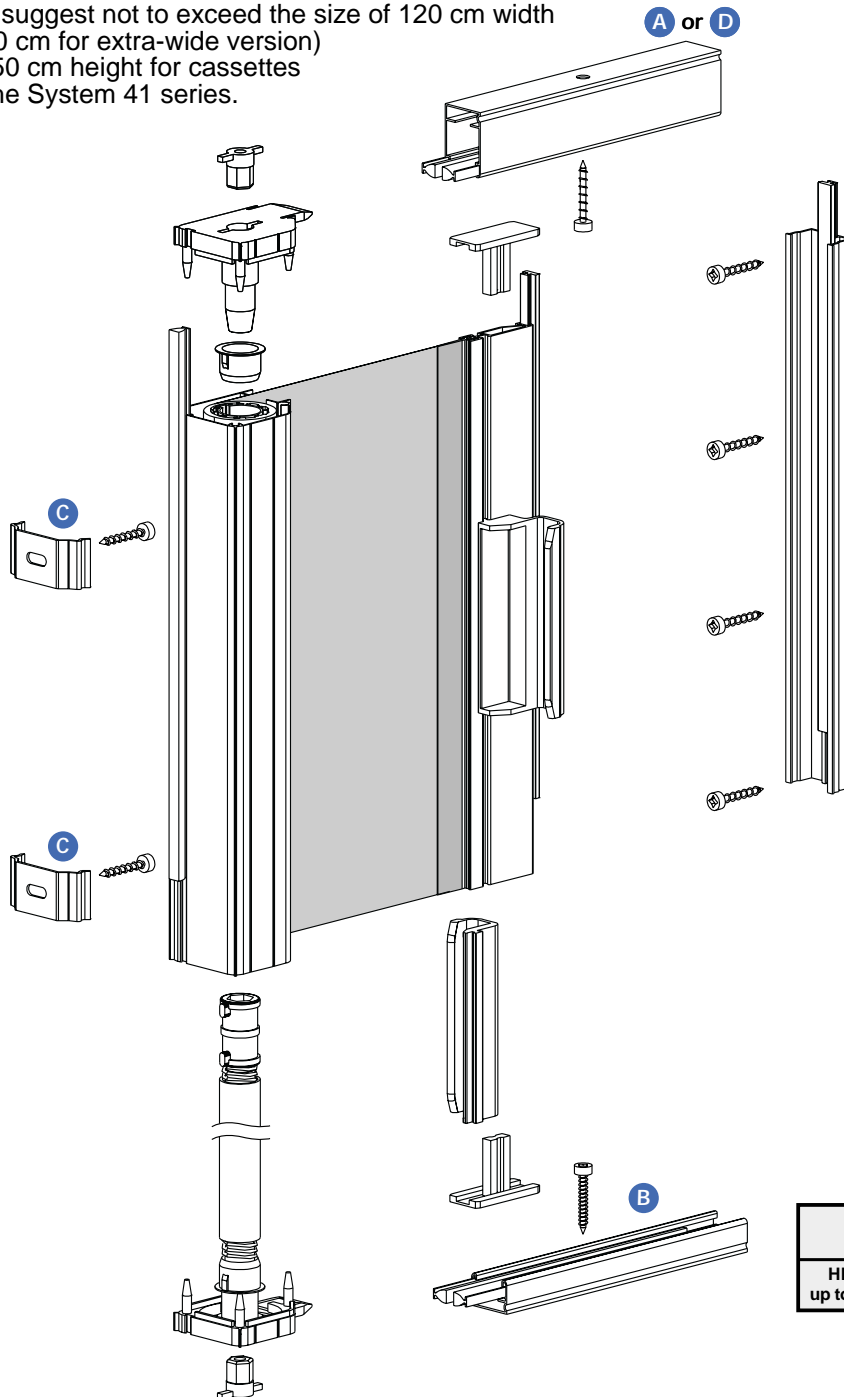
# system41

OPTION FOR  
FRONT FIX

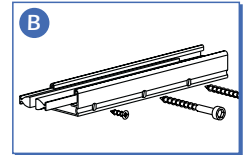
## SINGLE HORIZONTAL (DOOR) SYSTEM (INSET AND FRONT FIX)

**Maximum sizes recommended:**

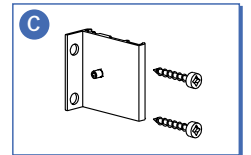
We suggest not to exceed the size of 120 cm width  
(170 cm for extra-wide version)  
x 250 cm height for cassettes  
in the System 41 series.



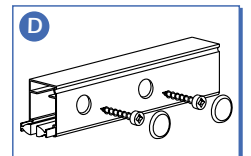
Option for front fix  
(single & double)



Option for front fix  
(single & double)



Option for front fix  
(single & double)



Option for front fix  
with cap  
(single & double)

**Spring loading** (clockwise)

	WIDTH up to 120 cm	WIDTH extra wide up to 170 cm
HEIGHT up to 250 cm	door spring 14/16 turns	extra long spring 25/27 turns

## CUTTING SPECIFICATIONS

**cassette**

cassette with tube,  
mesh and sliding bar: = opening height **minus** 19 mm **1 Pc.**

**guides**

top and bottom guides 40x22 mm  
and 22x22 mm: = opening width **minus** 54 mm **2 Pcs.**

**U-profile + magnet**

U-profile: = opening height **exact** **1 Pc.**

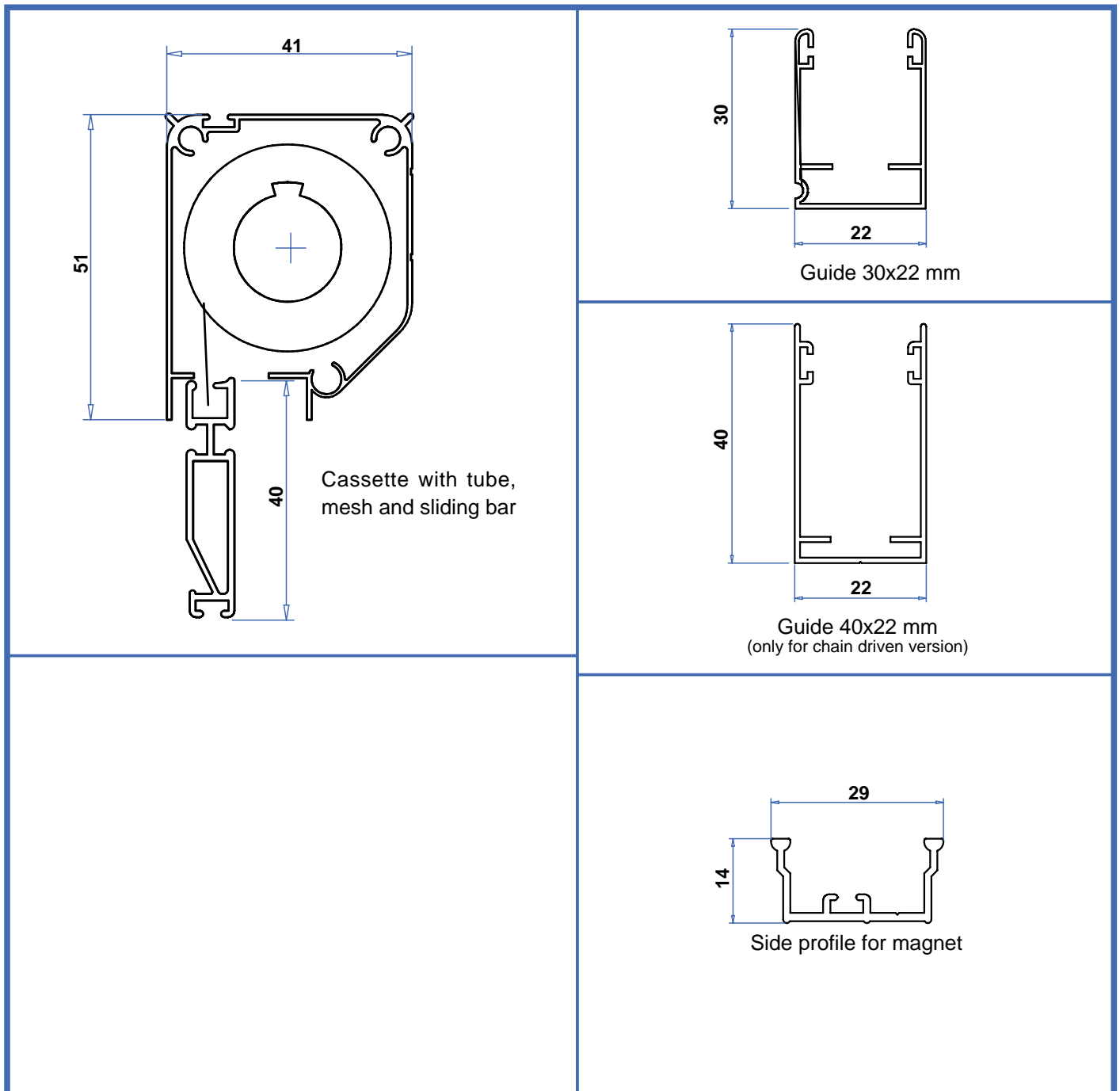
Above listed data may change without notice.

S.T. Syst41 OrizzSing LuceFront ING V.1.0 0802 • PDF

GCZ-Q07E/O

# system41

## P PROFILES AND SIZES

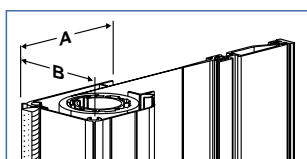


For U.S.A. see conversion table mm-inches

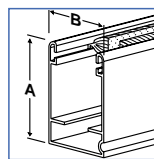
## 41 mm RETRACTABLE INSECT SCREEN

The accessory kit includes all necessary components to assemble a Single or Double Roller Screen Door. Inset mounted or Front mounted options are possible.

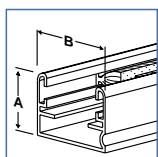
### Single & Double Horizontal (Door) Basic Profiles



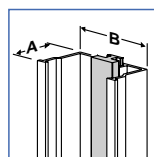
**code 01-00482-**  
Cassette with tube,  
mesh 175cm height  
and Sliding Bar  
A 51 mm. B 41 mm.



**code 01-02090-**  
Top Guide with pile  
A 30 mm. B 22 mm.



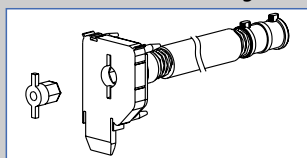
**code 01-02070-**  
Bottom Guide with pile  
A 15 mm. B 22 mm.



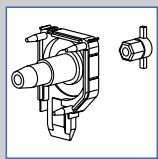
**code 01-06120-**  
Side Profile  
with magnets  
A 14 mm. B 25 mm.  
(Single Hoz. only)

- single door: 1 kit **code 01-04061-**
- double door: 2 kits **code 01-04061-**  
+ Sliding Bolt Lock kit **code 01-23190-**  
+ Magnets (Positive) **code 01-16000-0-5**  
(Negative) **code 01-16010-0-5**

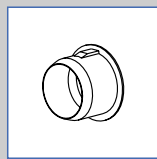
#### Accessory kit **code 01-04061-**



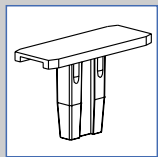
End Cap with spring  
+ bush + cap  
(1 pc.)



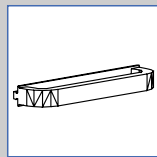
Plain End  
Cap + cap  
(1 pc.)



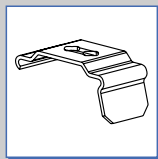
Bush for  
plain  
end cap  
(1 pc.)



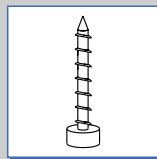
Sliding Bar  
End Cap  
(2 pcs.)



Handles  
(2 pcs.)

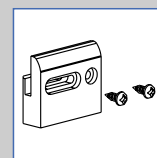


Fixing Bracket  
Inset Mounting  
(1 pc.)

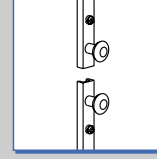


Fixing  
Screws

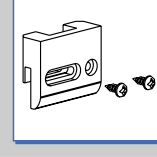
#### Lock Bolt kit **code 01-23190-**



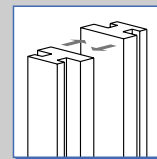
Top Guide  
Lock Keep + screws  
(1 pc.)



Lock Bolt  
Assembly

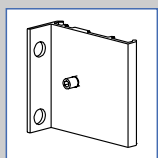


Bottom  
Guide Lock  
Keep + screws  
(1 pc.)

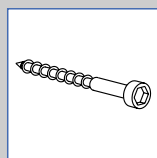


Magnetic Strips  
Positive/Negative  
**01-16000-0-5** (1 pc.)  
**01-16010-0-5** (1 pc.)

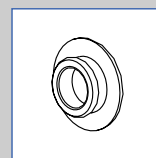
#### Additional accessories for front fix option



**code 01-26100-**  
Aluminium  
Angle bracket



**code 00-13140-0-0**  
Long Screw



**code 00-13050-**  
Plastic Cover  
Cap