

## ROLLER FLY SCREEN FOR WINDOWS

### INSTALLATION & OPERATING GUIDANCE

#### **THANK YOU!**

Thank you for purchasing this custom-made roller fly screen.  
We use only the best quality materials to guarantee a long-lasting product.  
Please read these instructions carefully before installing and operating your screen.  
Incorrect installation may result in damage or injury.  
Please use screws and plugs that are suitable to the fixing surface.  
Alterations of the blind should be approved by the blind manufacturer.  
If you have any queries or issues installing your blinds, please contact us  
by emailing [customer.services@newblinds.co.uk](mailto:customer.services@newblinds.co.uk)

#### **PARTS LIST**

- 1 x Spring Loaded cassette unit incorporating mesh and hem bar with handles.
- Cassette brackets – top fix or face fix (depending on your selection)
- 2 x Side channels
- 10mm cover caps for face fixed side guide channels.
- 1 x L-shaped profile – if selected.
- 1 x black plastic pile opener Tool
- \*Screws and plugs

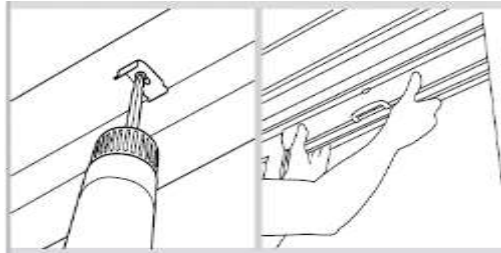
\*The screws and plugs provided are European style hex headed screws. These are provided by the system supplier, so we include them. We recommend selecting your own screws and plugs suitable for your fixing surface and tooling.

#### **CLOSURE METHODS**

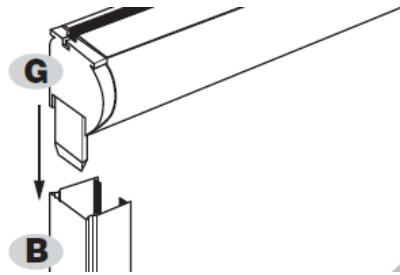
There are two methods of latching the retractable screen closed.

1. Using two small internal locks inserted in the bottom of each side guide. This is the normal situation for screens which are **Inset Fixed** into a reveal.
2. Using a length of L-shaped aluminium profile, fitted underneath the bottom of the side channels. This is suggested for **Face Fix** situations, where there is no bottom sill to seal against.

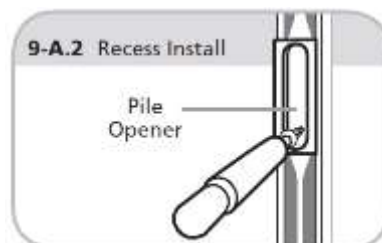
**INSTRUCTIONS FOR RECESS FIX INSTALLATION:**



- 1) Drill, plug and screw the clip fix bracket in the centre of the opening reveal (wider screens may be provided with 2 clip ). If the screen is not very wide, no clip is necessary.
- 2) Clip the Cassette into the bracket, by locating the back edge and snapping into place. The Cassette should fit neatly into the opening of the reveal.



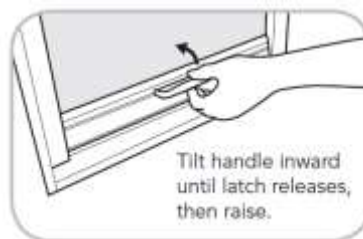
- 3) Slide the Side Guides (B) up onto the tongues of the Cassette end caps (G).
- 4) Feel inside the Side Guide. There should be a small hook at the front internal face of the Guide. The front external face of the guide rail also has a groove on the edge. The hook should face away from the user.
- 5) Pre-mark with a pencil, the visible face of the Side Guide to indicate where it will be fixed. Recommended 50 - 60mm from top and bottom of the Guide. Your guide rails may have been pre-drilled for recess fixing if you have selected this option.
- 6) Push the Side Guides square against the walls of the reveal.



- 7) Insert the black plastic Pile Opener Tool (optional) into the Guide at a point where you will fix into the reveal, separating the strips of pile to clear access for drilling and screwing. This may require

removing the Guide in order to insert a screw plug into the drilled hole, depending on the composition of the reveal walls. Fix both Guides in place.

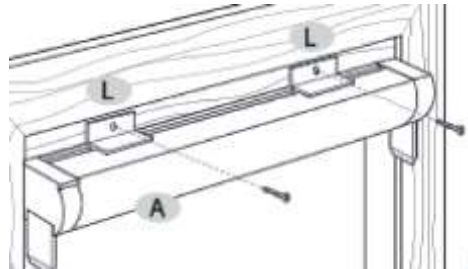
- 8) Using the handles on the sliding bar, pull the screen from the Cassette to be sure of un-impeded travel
- 9) When closing the screen, simply pull the screen down to the sill rotate the handle bar, top edge towards you, latching it under the internal locks in the side guide rails to secure it,
- 10) To release the screen, rotate the hem bar in the other direction (top edge away from you) for release.



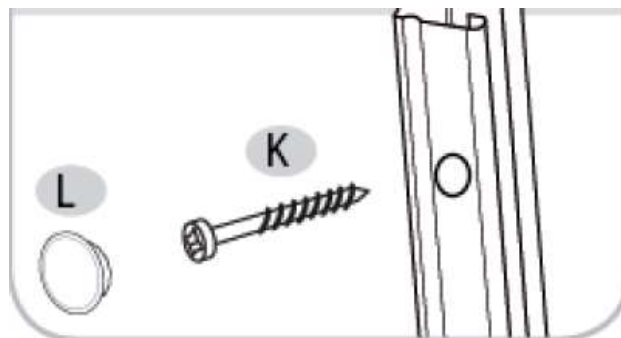
- 11) Release with care, holding the handle(s) or Pull-cord to be sure that the integral Brake mechanism is functioning. Try this several times to see that the screen returns gently into the Cassette.

**INSTRUCTIONS FOR FACE FIX INSTALLATION:**

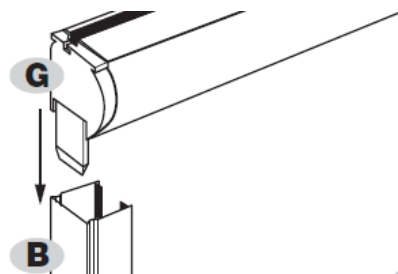
- 1) Slide the Angle Bracket (L) on the top of the Cassette (A) and locate centrally. Wider screens may be supplied with 2 or more.



- 2) Mark the preferred fixing position on the fixing surface and drill and plug ready to screw the bracket in place.
- 3) Screw the bracket in place. Slide the cassette into position, so that it overlaps the window or the opening.



- 4) If you have asked for your side channels to be prepared for face fix, there will be 10mm dia. Holes **ONLY** in the face of each Side Guide, and smaller screw holes in the rear face of the channel.



- 5) Slide the Guides (B) onto the Cassette End Cap tongues (G)
- 6) Mark where the screw holes are to be made in your fixing surface.
- 7) Drill and insert the screw plugs if required.
- 8) Re-assemble the side guides with the cassette end caps tongues and screw the side guide

channels into place.

- 9) Push Cover Caps over the 10mm holes in the face of the Guides.
- 10) Slide the L-shape Profile (if applicable) into place across bottom of the Guides rails, and mark position(s) for fixing.
- 11) Drill, plug and screw the L-shaped profile in place.
- 12) Using the handles on the sliding bar, pull the screen from the Cassette to be sure of un-impeded travel
- 13) When closing the screen, simply pull the screen down to the sill (or L-Profile), rotate the handle bar, top edge towards you, latching it under the internal locks in the side guide rails to secure it.
- 14) To release the screen, rotate the hem bar in the other direction (top edge away from you) for release.



- 15) Release with care, holding the Handle(s) or Pull-cord to be sure that the integral Brake mechanism is functioning. Try this several times to see that the screen returns gently into the Cassette.

**NOTES:**

In screens narrower than 550mm there is NO Brake mechanism.

PLEASE DO NOT simply release the Handle Bar. It is important to control the return motion of the screen into the Cassette to enhance a long lifespan of the screen and protect it from damage.

If the mesh accidentally comes out of the Side Guide(s), this will not normally cause damage to the screen as nothing holds it in. Simply tuck the mesh back in as best you can and allow the screen to gently re-wind back into the Cassette. Pull it down and hook it in position once again and it will have re-set itself.

This is not a safety or security screen. This product will not stop a child or pet from falling, provide security or protect your belongings.

## RETENSIONING INSTRUCTIONS

If you feel you need more or less tension in your cassette, you may carefully follow the instructions below to adjust tension.

- 1) Protect your hands with some hard-wearing gloves.
- 2) Lay the cassette down (side channels removed) in front of you with the sliding bar closest. The side of the cassette with the spring is the left hand.
- 3) Carefully remove the left-hand end cap of the cassette.
- 4) Do not let go of the cassette end cap or it will spin around very fast releasing the tension, which may cause damage or injury if hands are unprotected
- 5) Manually rotate the end cap until all tension is discharged.
- 6) Then add tension back onto the screen by turning in the opposite direction.
- 7) Add between 14 and 16 turns.
- 8) You may adjust to suit. Thicker more tacky meshes (Pet, Pollen, Midge) may require higher tension.
- 9) Relocate the end cap back into the end of the cassette and push it into place.

## MAINTENANCE INSTRUCTIONS

- Roller Insect screens are only deployed when the window or door is open and, therefore, the mesh is enclosed in its Cassette and not be exposed to dirt and grime picked up typically by fixed insect screens. This limits the amount of maintenance needed.
- Cassette and Guides are made from powder-coated aluminium and therefore, rust proof. Depending on the installation, outdoors or indoors, they may require periodic cleaning, wiping using a cloth and a little soapy water.
- Before use first time each season, check that the Guides (especially door bottom guide) are clear of obstruction.
- The mesh is pvc-coated fibreglass and is weather-proof and relatively robust. Should it require cleaning, deploy the screen fully and wipe down with a cloth and a little soapy water.
- In some environments, such as kitchens and food preparation areas, as with any system, every so often it will be necessary to remove the whole screen in order to remove grease and dirt which may have built up behind the screen and in between the wall and the framework. This opportunity can be used to thoroughly wipe down the mesh by extending it fully and to remove the polypropylene pile strips from the guides to be washed by hand in hot soapy water.

## **DOs AND DON'Ts**

Whilst the systems are relatively maintenance-free if used correctly, we cannot account for damage caused when the screen is used incorrectly or is abused.

The following tips of DOs and DON'Ts, if adhered to should ensure that your Retractable Insect Screen gives the user a long life of protection:

### **DO**

- Familiarise yourself with the installation and operating instructions for ease of use
- Ask us if there is something which is not clear or appears not to work. This is a very simple system to use if operated correctly.
- Guide the Handle Bar and screen slowly and smoothly back to the Cassette under control.
- Step carefully over the Bottom Guide of a Single or Double Horizontal Door System. Whilst this is a robust system, it is simply not designed to stand up to being kicked or stepped on as this may cause screen traverse to be impaired, by a kinked Guide.
- Follow the Maintenance guidance if the screen is employed in an environment where the build-up of grease or dirt could be a problem, or if the screen is externally installed.

### **DO NOT**

- Simply let the mesh recoil uncontrolled back into the Cassette, even when you know the Brake is operating.