

## Operation instruction – IQ2-Motor

IQ2-170

The IQ2-motor is fitted with 4 functions.

Open the hanging, close the hanging, tilt the louvres left (anti-clockwise) and tilt the louvres right (clockwise). These functions are controlled by two operating buttons.

**Function:****„CLOSE travel“ (▶◀)**

Short press on the button (half a second):

The louvres rotate and then the louvre hanging closes, after which the tilting function closes.

**„OPEN travel“ (◀▶)**

Short press on the button (half a second):

The louvres rotate and then the louvre hanging travels in the direction of the louvre pack.

**„Tilting“**

Hold down the button:

The louvres rotate into the desired position to the left or to right (0° - 180°).

**Operation:****Run the louvre hanging to form a pack**

1. Completely close the louvre hanging:

Short press on the "OPEN travel" button: The louvres rotate to 180° (louvres completely closed) then rotate back to the decor position, and then they travel in the direction of the louvre pack.

2. The louvre hanging is not completely closed:

Press short the "OPEN travel" button: The louvres rotate into the decor position and then they travel in the direction of the louvre pack.

**Close the louvre hanging (singly)**

1. The louvre hanging is not completely closed:

Short press on the "CLOSE travel" button: The louvres rotate into the decor position and then the louvre hanging closes, after which the tilting function closes.

2. The louvre hanging is singly and in the decor position:

Press short the "CLOSE travel" button: The louvres rotate anti-clockwise to 180° and the tilting movement stops automatically.

**Tilting the louvres**

1. Louvre hanging closed:

The louvres can be tilted from 0 - 180° with the aid of holding down the "OPEN travel" or "CLOSE travel" button.

2. Louvre hanging failed to close:

Within the two decorative effect positions the louvres can be tilted with the aid of the "OPEN travel" and "CLOSE travel" buttons. When one of the decorative effect positions has been reached, the louvres stop for a half second before they travel in the direction of the louvre pack or rather close the louvre hanging (singly).

**Additional functions:****Standard decor position**

If the desired angle of the louvres has been set with the louvres closed, the user presses both buttons simultaneously for 3 seconds. The drive unit accepts the current angle and indicates this with an audible signal (1 x short).

If the set angle lies outside of the range from 30-150 degrees the setting will not be accepted.

If the tilt angle lies within in the range from 85-95 degrees, the standard decor position is deleted and this is indicated by a signal (1 x short, 1 x long).

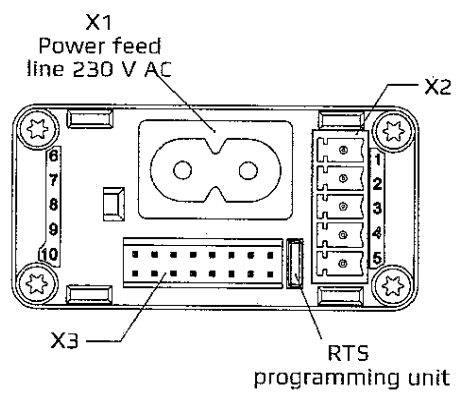
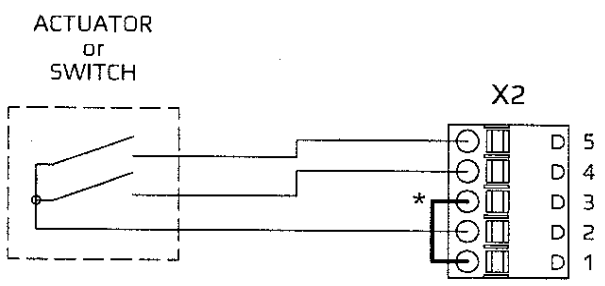
**Intermediate stop**

Once the desired position set between the end position (however at least 10 cm away from both end positions), the user presses both buttons simultaneously for 3 seconds.

The drive unit accepts the current position and indicates this with an audible signal. If the position lies within an invalid range, this is indicated to the user by an audible signal (1 x short).

If the position is in a range within 10 cm far from on end position, the intermediate stop is deleted and this is indicated by a signal (3 x long).

### Wiring - Individual control - IQ2-Motor IQ2-300 b



Power consumption per drive: 10 mA

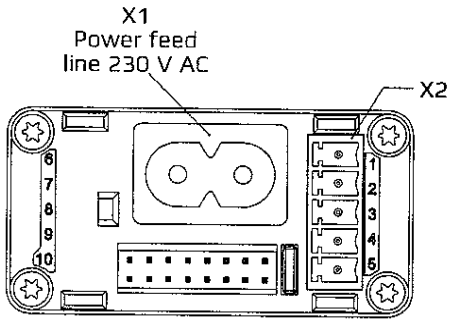
X1		X2				
Pin	Function	Pin	Function	LIYY 4 x 0,14 mm <sup>2</sup>	J-Y(ST)Y 2 x 2 x 0,8	Comment
L	230 V	1	+ 24 V (max. 80 mA)	WH (white)	RD (red)	Vout
N	230 V	2	GND	BN (brown)	BK (black)	Vout
		3	Coding *			
		4	UNSTACK (><)	GN (green)	WH (white)	Control signal
		5	STACK (<>)	YE (yellow)	YE (yellow)	Control signal

\* Pin 3 : Connection X2/1 zu X2/3 = Ground as control signal  
 No connection = Pole reversal principle (control)

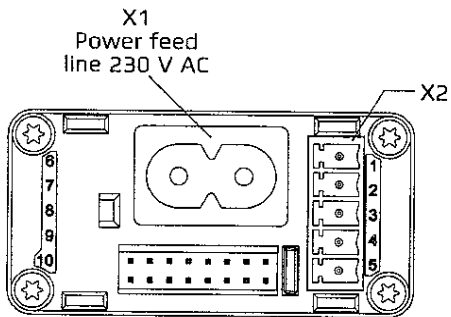
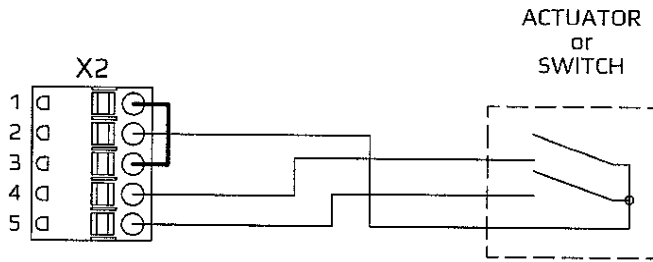
Wiring - Individual control - IQ2-Motor

IQ2-300 c

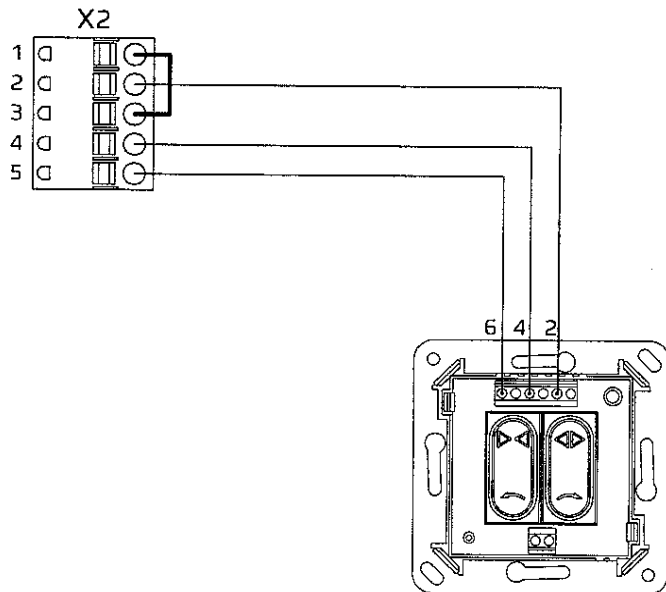
Ground as control signal (Potential-free)



Power consumption per drive: 10 mA



Power consumption per drive: 10 mA



X1		X2				
Pin	Function	Pin	Function	LIYY 4 x 0,14 mm <sup>2</sup>	J-Y(ST)Y 2 x 2 x 0,8	Comment
L	230 V	1	+ 24 V (max. 80 mA)	WH (white)	RD (red)	Vout
N	230 V	2	GND	BN (brown)	BK (black)	Vout
		3	Coding *			
		4	UNSTACK (><)	GN (green)	WH (white)	Control signal
		5	STACK (<>)	YE (yellow)	YE (yellow)	Control signal

\* Pin 3 : Connection X2/1 zu X2/3 = Ground as control signal  
 No connection = Pole reversal principle (control)